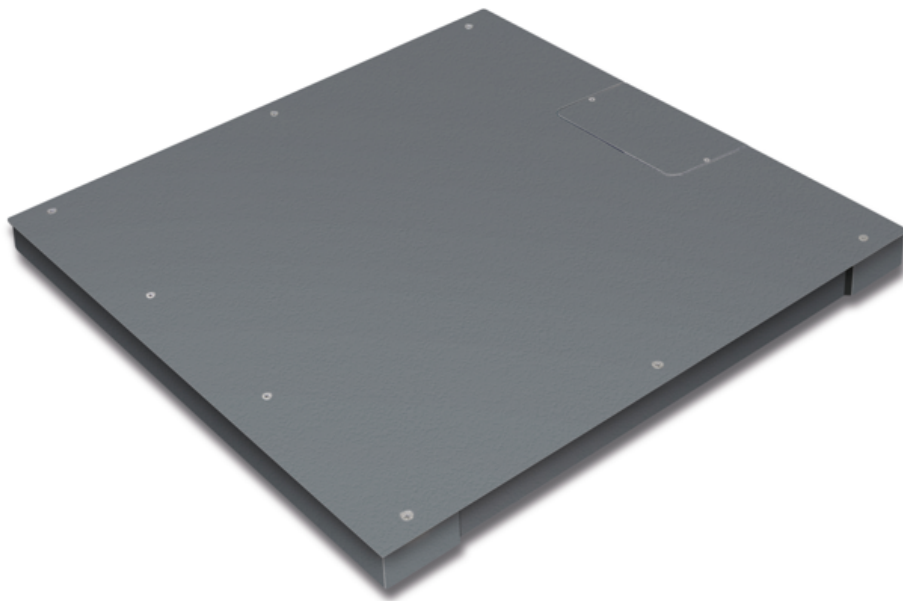


# KERN KFP 1500V20NM

Platform: weighing plate of stainless steel, painted steel base, silicone-coated aluminium load cell with protection against dust and water splashes IP65

# KERN®



## Article codes, product groups & Status information

Model article-code	KFP 1500V20NM
Model-Serie	KFP
Assortment	KERN
Product Type	Industrial balance
Product group	Platforms
Product usage type	Spare part;Main article
EAN code (Model)	4045761493803
Predecessor Model	KFP 1.500V20NM-2.024a; KIP 1.500V20EM; KIP 1.500V20M
Planned start date	2026-1HJ
Customs tariff number	90318080
Country of Origin	CN

## Technical data - Primary

Weighing capacity	1.500 kg
Readability	500 g
Verification value (e)	500 g
Minimum load (Min)	10 kg
Net weight	147 kg
Dimension weighing platform (W×D×H)	1.500×1.250×85 mm

## Technical data - Construction

Material weighing plate	Steel, powder-coated
Revolving screw feet	Yes

## Functions

Standard

Weighing surface (d)	1.500×1.250 mm
Dimensions of weighing plate (W×D)	1.500×1.250 mm
IP protection platform	IP67
IP protection load cell	IP67

## Technical data - Measuring system

load cell connection	6-Leiter
----------------------	----------

## Technical data - Packing & Shipping

Dimensions packaging (W×D×H)	1.615×1.330×360 mm
Gross weight	200 kg
Net weight	150 kg
Shipping method	Freight
Packaging component - by weight - cardboard	1.040 g
Packaging component - by weight - wood	50,96 kg
Delivery time	2 d

## Technical data - Verification

Verification by KERN possible	Yes
-------------------------------	-----

# KERN KFP 1500V20NM



Platform: weighing plate of stainless steel, painted steel base, silicone-coated aluminium load cell with protection against dust and water splashes IP65



Factory

