

PRODUCT BROCHURE

SAUTER TI-AC

Date: 09.03.2026

ENGLISH



Lever operated test stand for hardness testing with base plate made of glass

CONTACT

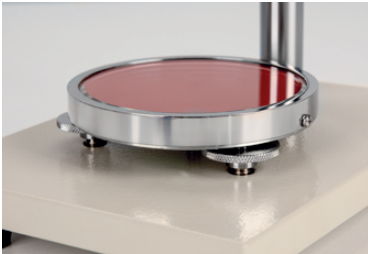
KERN & SOHN GmbH
Ziegelei 1
72336 Balingen
Germany

Phone : +49 7433 9933-0
Fax : +49 7433 9933-149
Email : info@kern-sohn.com
Web : www.kern-sohn.com



Scan here for more
information

PRODUCT SHOWCASE



DESCRIPTION

- For Shore hardness testing of plastics, leather etc.
- Glass plate: high measurement accuracy by means of superior hardness of the glass plate
- Mechanical construction: Robust design enables accurate measuring movements
- Level adjustment: For the precise levelling of the base plate, e.g. for the correction of inhomogeneous test objects
- Hardness tester is not included with delivery
- Operation:
 1. The SAUTER hardness testing device HBA/HB0 is fitted in a suspended position
 2. The test object is placed on the round testing table right under the durometer measuring tip
 3. By pressing the lever down, the test weight will be released, and this then presses the measuring tip into the test object with its own weight (see test force hardness measurement)
- The accuracy of the displayed result is about 25 % higher than in a manual operated test

SPECIFICATIONS

Article codes, product groups & Status information

Model article-code	TI-AC
Model-Serie	TI
Assortment	Sauter

Product Type	Hardness measurement
Product group	Hardness testers (Shore)
Product usage type	Main item;Accessories/Services
EAN code (Model)	4045761140233
Predecessor Model	TI-AC-2019a

Customs tariff number	90248000
Country of Origin	CN

Technical data - Primary

Hardness scales	Shore A
-----------------	---------

Technical data - Construction

Material housing	stainless steel
------------------	-----------------

Technical data - Measuring system

Test force Hardness measurement	10 N
---------------------------------	------

Technical data - Environmental conditions

Maximum storage temperature	40 °C
Minimum storage temperature	-10 °C

Technical data - Packing & Shipping

Dimensions packaging (W×D×H)	380×255×195 mm
Gross weight	8 kg
Net weight	7 kg
Shipping method	Parcel service
UN number	No dangerous goods
Packaging component - by weight - cardboard	650 g
Packaging component - by weight - styrofoam	650 g
Delivery time	1 d

FUNCTIONS

Standard



SPARE PARTS

Model	Description
<u>RTI-9000</u>	RTI-9000
<u>RTI-9001</u>	Lever arm bolts SAUTER RTI-9001
<u>RTI-9002</u>	Mounting KERN RTI-9002