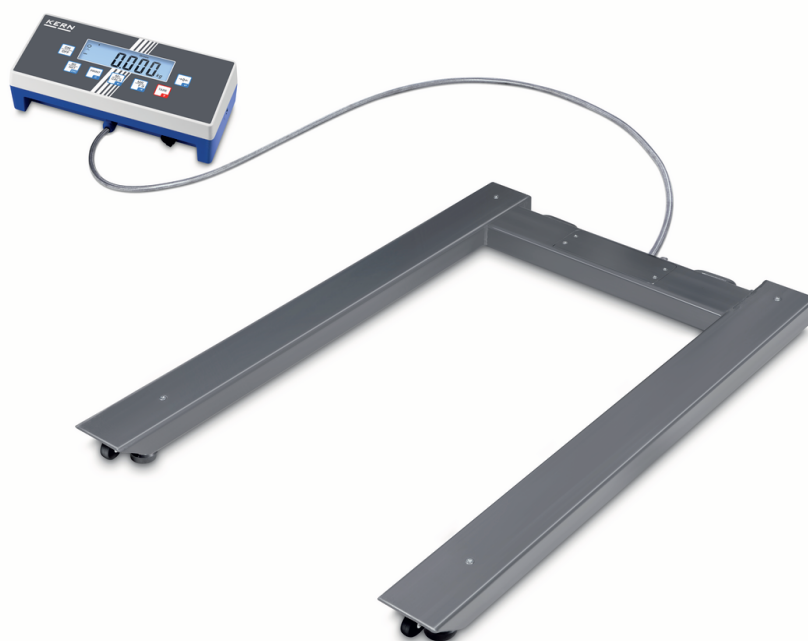


PRODUCT BROCHURE

KERN UID 600K-1DM

Date: 29.04.2025

ENGLISH



High-resolution multi-range pallet scale with a wide range of interfaces, verification optional

CONTACT

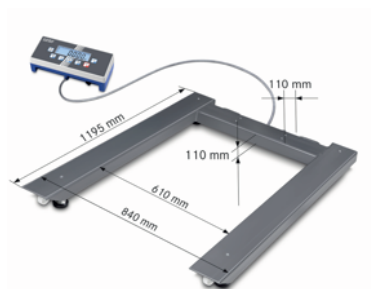
KERN & SOHN GmbH
Ziegelei 1
72336 Balingen
Germany

Phone : +49 7433 9933-0
Fax : +49 7433 9933-149
Email : info@kern-sohn.com
Web : www.kern-sohn.com



Scan here for more
information

PRODUCT SHOWCASE



DESCRIPTION

- Multi-range pallet scale! Ideal, when high maximum loads need to be weighed, but in the lower load range you still need high resolution. This means that two balances can be replaced with one – which saves space and money!
- High mobility thanks to rechargeable battery operation (optional)
- Display device: Protection against dust and water splashes IP65
- Load support: steel, powder coated, 4 load cells, alloy steel, silicone-coated, protection against dust and water splashes IP67
- The scale can be easily transported using rollers and a handle and does not require much storage space
- Totalising of weights and piece counts
- Searching and remote control of the balance using external control devices or computers with the KERN Communication Protocol (KCP). KCP is a standardised interface command structure for KERN balances and other instruments which allows you to recall and manage all relevant parameters and device functions. You can therefore simply connect KERN devices with KCP to computers, industrial control systems and other digital systems. In a large number of cases the KCP is compatible with the MT-SICS protocol
- Thanks to interfaces such as RS-232 or USB, WiFi, Bluetooth, Ethernet (optional), the scale can easily be connected to existing networks. Data exchange between the scale, PC or printer
- Protective working cover included with delivery

SPECIFICATIONS

Article codes, product groups & Status information

Model article-code	UID 600K-1DM
Model-Serie	UID
Assortment	KERN

Product Type	Industrial scales
Product group	Pallet scales
Product usage type	Main article
EAN code (Model)	404576 1230200
Customs tariff number	84238220
CE Label	yes

Technical data - Primary

Weighing capacity	300 kg; 600 kg
Readability	0.1 kg; 0.2 kg
Minimum load (Min)	2 kg; 4 kg
Net weight	44 kg

Technical data - Construction

Dimensions display casing (W×D×H)	268×115×80 mm
Material weighing plate	steel, powder-coated
Bubble Level	yes
Revolving screw feet	yes
Weighing surface (d)	1195×840 mm
Dimensions of weighing plate (W×D)	1195×840 mm
Indicator cable length	5 m
Wall mount	yes
Dimension weighing platform (W×D×H)	1195×840×110 mm
IP protection indicator	IP65
IP protection load cell	IP67

Technical data - Display

Display height	25 mm
----------------	-------

Backlight	yes
-----------	-----

Technical data - Power supply

Battery	no battery
Mains adapter/adaptor included	EURO;UK;US
Charging time	3 h
Input Voltage	100V-240V AC 50/60Hz 0.4 Amax
Operating time (Backlight off)	43 h
Rechargeable battery	Rchrg. battery optional - intern

Technical data - Measuring system

Calibration method	Adjusting with external weight
Linearity	± 0.3 kg; 0.6 kg
Readability	0.1 kg; 0.2 kg
Recommended adjusting weight	600 kg (M1)
Repeatability	0.1 kg; 0.2 kg
Resolution	3.000, 3.000
Tare range	-600 kg
Warm up time	10 min; 10 min
Weighing units	g;HJ;kg;lb;oz;PCS;tj
load cell connection	4-guide

Technical data - Environmental conditions

Maximum humidity	95 %
Maximum operating temperature	40 °C

Minimum ambient temperature	-10 °C
Minimum humidity	10 %

Technical data - Packing & Shipping

Dimensions packaging (W×D×H)	1270×900×260 mm
Gross weight	65 kg
Net weight	44 kg
Shipping method	Freight
Packaging component - by weight - cardboard	420 g
Packaging component - by weight - wood	20580 g
Delivery time	2 d

Optional Services

DAkkS Calibration	963-130
Verification	965-230

Technical data - Verification

Verification value (e)	0.1 kg; 0.2 kg
Minimum Load Min	2 kg; 4 kg
Verification by KERN possible	yes
Verification class	III

FUNCTIONS

Standard



Option



Factory



ACCESSORIES

Model	Description
KFB-A01	Internal Rechargeable Battery Pack KERN KFB-A01
911-013	Matrix needle printer KERN 911-013
BFB-A03	Cable KERN BFB-A03
YKI-02	RS-232 / Bluetooth adapter KERN YKI-02
EOC-A01	Protective Working Cover KERN EOC-A01
EOC-A04	Bracket KERN EOC-A04
KIB-A02	interface KIB-A02
KIB-A03	Data Interface KERN KIB-A03
KIB-A06	Signal lamp KIB-A06
KIB-A01	Alibi memory KERN KIB-A01
EOB-A02B	Column for KERN EOB-A02B
YKA-20	Power Adapter KERN YKA-20
EOC-A12	Interface cable EOC-A12
KIB-A10	Data Interface KERN KIB-A10
KIB-A05	Data Interface KERN KIB-A05
KIB-A13	Alibi memory KERN KIB-A13
YKH-01	Thermal printer KERN YKH-01
YKC-01	Thermal printer KERN YKC-01

SERVICES

Model	Description
965-230	Verification / Conformity assessment according to NAWI (2014/31/EU) KERN 965-230
965-403	Cable extension 965-403
965-404	Cable extension 965-404
965-405	Cable extension 965-405
963-130	DAkkS Calibration KERN 963-130
961-250	Adjustment at the location of installation 961-250
969-517	Confirmation of the manufacturer's specification (only in combination with DAkkS calibration certificate) 969-517
970-106	Warranty extension KERN (+2 years) 970-106

SPARE PARTS

Model	Description
KFB-A01	Internal Rechargeable Battery Pack KERN KFB-A01
EOC-A01	Protective Working Cover KERN EOC-A01
YKA-20	Power Adapter KERN YKA-20
RKIB-5001	Power socket KERN RKIB-5001
RKIB-8002	Rubber base display KERN RKIB-8002
RKIB-TM-3001	LCD Display RKIB-TM-3001
RKIB-TM-4001	Keyboard overlay KERN RKIB-TM-4001
RBIC-8001	Adjustable base foot RBIC-8001
RBID-5001	Cable RBID-5001
RUIB-8001	Transport roller KERN RUIB-8001
RBID-1003	Load cell KERN RBID-1003
RKIB-8001	Battery compartment cover KERN RKIB-8001
RTUID-1001	Load cell KERN RTUID-1001
RUIB-8002	Adjustable base foot KERN RUIB-8002
REOC-2002	Processor PCB KERN REOC-2002

SOFTWARES

Model	Description
SET-17	KERN EasyTouch SET-17 PrePack
SET-01	KERN EasyTouch SET-01 Base
SET-21	KERN EasyTouch SET-21 Formulation
SET-22	KERN EasyTouch SET-22 Difference
SET-31	KERN EasyTouch SET-31 Tolerance
SET-32	KERN EasyTouch SET-32 Count
SET-33	KERN EasyTouch SET-33 Target Count
SET-04	KERN EasyTouch SET-04 Density
SET-05	KERN EasyTouch SET-05 Dynamic
SET-06	KERN EasyTouch SET-06 Classification
SET-07	KERN EasyTouch SET-07 Variable
SET-08	KERN EasyTouch SET-08 Take-out

Model	Description
SET-10	KERN EasyTouch SET-10 Save Server
SET-11	KERN EasyTouch SET-11 Safety
SET-16	KERN EasyTouch SET-16 Batch and Statistics
SET-14	KERN EasyTouch SET-14 Individual Print
SET-28	KERN EasyTouch SET-28 Customization Service
SET-35	KERN EasyTouch SET-35 Assembly Count
SET-18	KERN EasyTouch SET-18 Container Master
SET-46	KERN EasyTouch SET-46 Backup Scheduler
SET-51	KERN EasyTouch SET-51 Audit Logs
SET-411	KERN EasyTouch SET-411 Hotkeys

RELATED ARTICLES DATA

Model name	Weighing capacity	Readability	Minimum load (Min)	Net weight
UID 1500K-1M	1500 kg	0.5 kg	10 kg	44 kg
UID 600K-1M	600 kg	0.2 kg	4 kg	44 kg
UID 3000K-0M	3000 kg	1 kg	20 kg	44 kg
UID 1500K-1DM	600 kg; 1500 kg	0.2 kg; 0.5 kg	4 kg; 10 kg	44 kg
UID 600K-1DM	300 kg; 600 kg	0.1 kg; 0.2 kg	2 kg; 4 kg	44 kg
UID 3000K-0DM	1500 kg; 3000 kg	0.5 kg; 1 kg	10 kg; 20 kg	44 kg