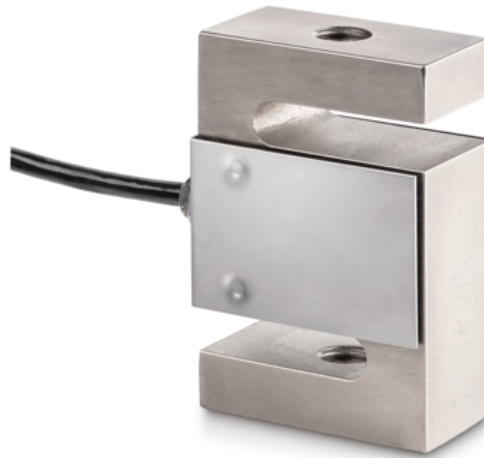


# KERN CS 150-3P1

4-wire "S" measuring cell made of nickel-plated steel for force and mass measurement



## Article codes, product groups & Status information

Model article-code	CS 150-3P1
Model-Serie	CS P1
Assortment	Sauter
Product Type	Measuring cells
Product group	S-shape load cells
Product usage type	Main item;Accessories/Services
EAN code (Model)	4045761221475
Planned start date	2019-1HJ
Customs tariff number	90249000
CE Label	Yes

## Technical data - Primary

Force directions	Compression;tension
OIML class	C3
Weighing capacity	150 kg
Max (N)	1,5 kN

## Technical data - Construction

IP Protection	IP67
Material	Steel, nickel-plated
Dimensions (W×D×H)	50,8×76,2×20,8 mm
cable length	3 m
Mounting force in	Threaded hole M10
Mounting force out	Threaded hole M10

## Technical data - Power supply

Excitation Voltage min.	5 V
Excitation Voltage max.	12 V

## Technical data - Measuring system

Full scale output	2 mV/V
combined error	0,02%
load cell connection	4-guide
measuring applications	Force;mass

## Technical data - Environmental conditions

Usage Temperature (min)	-10 °C
Usage temperature (max)	40 °C

## Technical data - Packing & Shipping

Dimensions packaging (W×D×H)	185×155×60 mm
Gross weight	0.65 kg
Net weight	0.55 kg
Shipping method	Parcel service
Packaging component - by weight - cardboard	97 g
Delivery time	1 d

## Technical data - Verification

Resolution loadcell (e)	3000 e
-------------------------	--------

## Functions

Standard

# KERN CS 150-3P1

4-wire "S" measuring cell made of nickel-plated steel for force and mass measurement



IP 67



1 DAY

Option



+3 DAYS



+4 DAYS