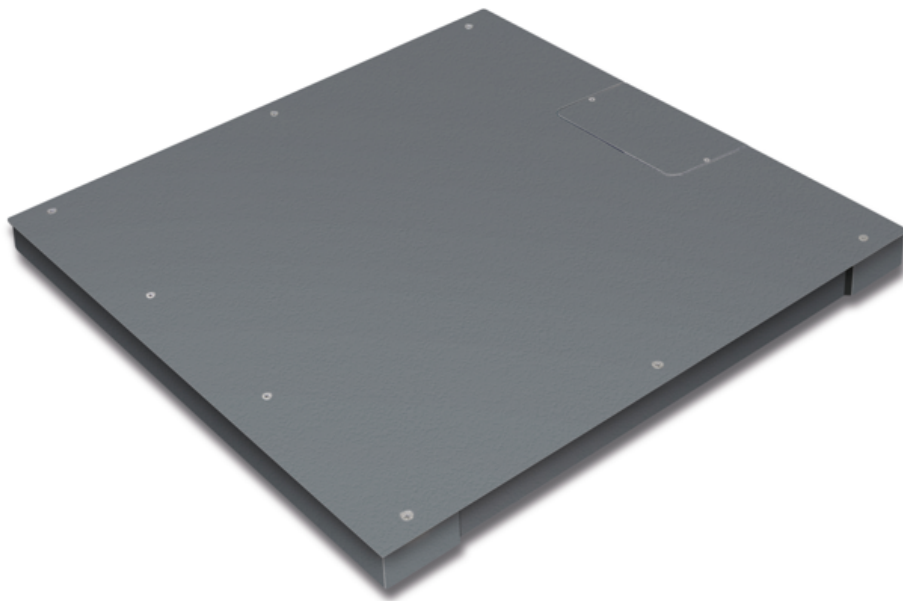


KERN KFP 600V20NM

Platform: weighing plate of stainless steel, painted steel base, silicone-coated aluminium load cell with protection against dust and water splashes IP65

KERN®



Article codes, product groups & Status information

Model article-code	KFP 600V20NM
Model-Serie	KFP
Assortment	KERN
Product Type	Industrial balance
Product group	Platforms
Product usage type	Spare part;Main article
EAN code (Model)	4045761493940
Predecessor Model	KFP 600V20NM-2.024a; KIP 600V20M
Planned start date	2026-1HJ
Customs tariff number	90318080
Country of Origin	CN

Technical data - Primary

Weighing capacity	600 kg
Readability	200 g
Verification value (e)	200 g
Minimum load (Min)	4 kg
Net weight	147 kg
Dimension weighing platform (W×D×H)	1.500×1.250×85 mm

Technical data - Construction

Material weighing plate	Steel, powder-coated
Revolving screw feet	Yes
Weighing surface (d)	1.500×1.250 mm

Functions

Standard

Dimensions of weighing plate (W×D)	1.500×1.250 mm
------------------------------------	----------------

IP protection platform	IP67
------------------------	------

IP protection load cell	IP67
-------------------------	------

Technical data - Measuring system

load cell connection	6-Leiter
----------------------	----------

Technical data - Packing & Shipping

Dimensions packaging (W×D×H)	1.615×1.330×345 mm
------------------------------	--------------------

Gross weight	200 kg
--------------	--------

Net weight	150 kg
------------	--------

Shipping method	Freight
-----------------	---------

Packaging component - by weight - cardboard	1.020 g
---	---------

Packaging component - by weight - wood	49.980 g
--	----------

Delivery time	2 d
---------------	-----

Technical data - Verification

Verification by KERN possible	Yes
-------------------------------	-----

KERN KFP 600V20NM



Platform: weighing plate of stainless steel, painted steel base, silicone-coated aluminium load cell with protection against dust and water splashes IP65



Factory

