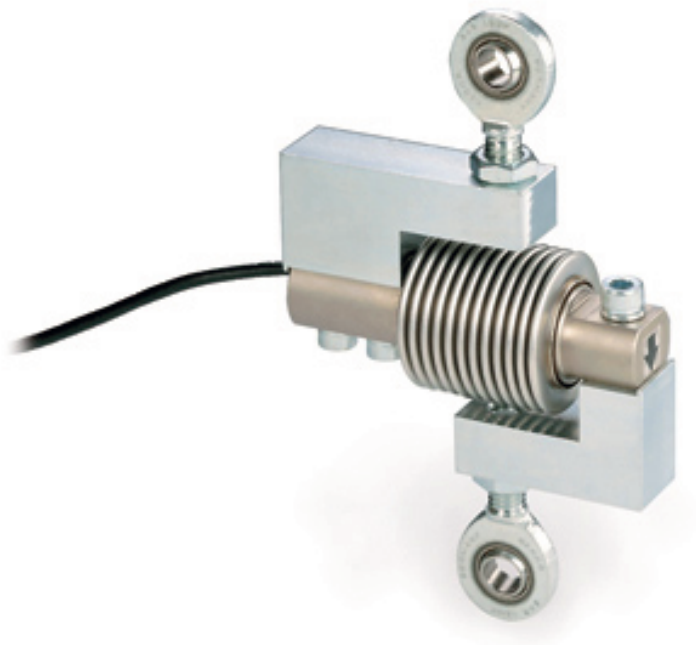


SAUTER CE Q34905

Date: 29.01.2025

ENGLISH



Traction device without rod ends

CONTACT

 Address

KERN & SOHN GmbH
Ziegelei 1
72336 Balingen
Germany

 Phone and fax

Phone : +49 - [0] 7433 - 9933 - 0
Fax : +49 - [0] 7433 - 9933 - 149

 Internet

Email : info@kern-sohn.com
Web : www.kern-sohn.com

DESCRIPTION

Traction device CE Q34905

SPECIFICATION

Article codes, product groups & Status information

Model article-code	CE Q34905
Model-Serie	CE
Assortment	Sauter
Product Type	Measuring cells
Product group	Accessories
Product usage type	Accessories/DL
EAN code (Model)	4045761221796
Planned start date	2019-1HJ
Customs tariff number	84239010
Discontinued model	yes

Technical data - Packing & Shipping

Packaging component - by weight - plastics	10 g
Delivery time	1 d

FUNCTIONS

Standard



ACCESSORIES

Model	Description	Price
CE R12	Rod end SAUTER CE R12	44.00 €
CE RR12	Rod end SAUTER CE RR12	70.00 €