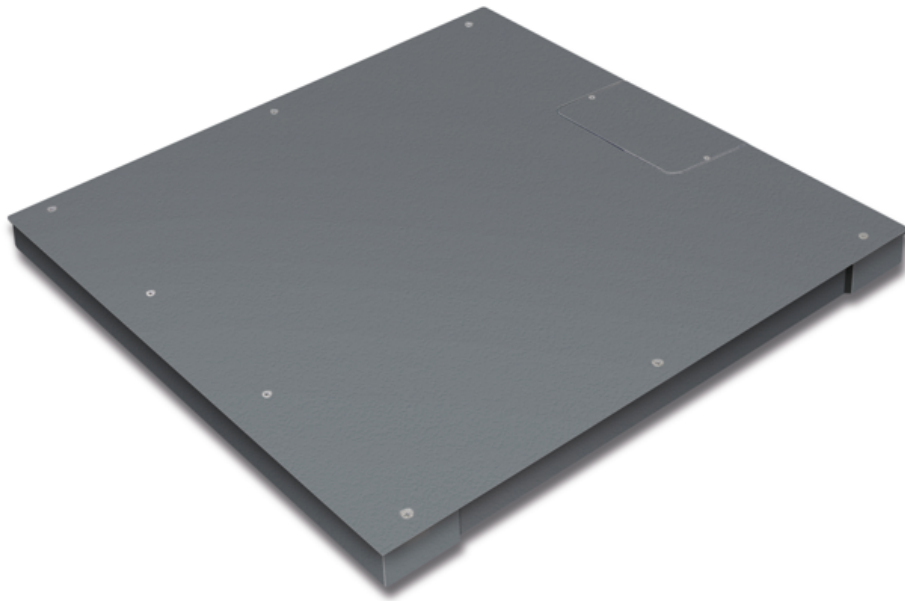


KERN KFP 1500V20SNM

Platform: weighing plate of stainless steel, painted steel base, silicone-coated aluminium load cell with protection against dust and water splashes IP65

KERN®



Article codes, product groups & Status information

Model article-code	KFP 1500V20SNM
Model-Serie	KFP
Assortment	KERN
Product Type	Industrial balance
Product group	Platforms
Product usage type	Spare part;Main article
EAN code (Model)	4045761493810
Predecessor Model	KFP 1.500V20SNM-2.024a; KIP 1.500V20SM
Planned start date	2026-1HJ
Customs tariff number	90318080
Country of Origin	CN

Technical data - Primary

Weighing capacity	1.500 kg
Readability	500 g
Verification value (e)	500 g
Minimum load (Min)	10 kg
Net weight	96 kg
Dimension weighing platform (W×D×H)	1.000×1.000×85 mm

Technical data - Construction

Material weighing plate	Steel, powder-coated
Revolving screw feet	Yes

Functions

Standard

Weighing surface (d)	1.000×1.000 mm
Dimensions of weighing plate (W×D)	1.000×1.000 mm
IP protection platform	IP67
IP protection load cell	IP67

Technical data - Measuring system

load cell connection	6-Leiter
----------------------	----------

Technical data - Packing & Shipping

Dimensions packaging (W×D×H)	1.115×1.080×350 mm
Gross weight	135 kg
Net weight	100 kg
Shipping method	Freight
Packaging component - by weight - cardboard	720 g
Packaging component - by weight - wood	35.280 g
Delivery time	2 d

Technical data - Verification

Verification by KERN possible	Yes
-------------------------------	-----

KERN KFP 1500V20SNM



Platform: weighing plate of stainless steel, painted steel base, silicone-coated aluminium load cell with protection against dust and water splashes IP65



Factory

