

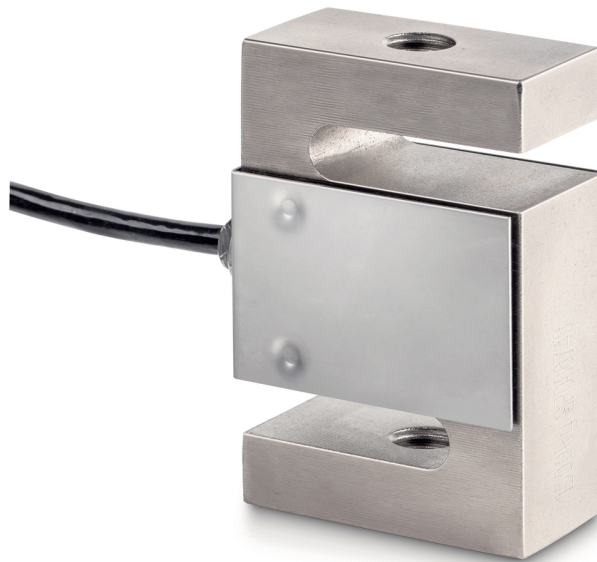
## PRODUCT BROCHURE

---

# SAUTER CS 150-3P1

Date: 29.04.2025

ENGLISH



4-wire "S" measuring cell made of nickel-plated steel for force and mass measurement

---

### CONTACT

KERN & SOHN GmbH  
Ziegelei 1  
72336 Balingen  
Germany

Phone : +49 7433 9933-0  
Fax : +49 7433 9933-149  
Email : [info@kern-sohn.com](mailto:info@kern-sohn.com)  
Web : [www.kern-sohn.com](http://www.kern-sohn.com)



Scan here for more  
information

## DESCRIPTION

- RoHS compliant
- Area of application: for tensile and compressive force measurement
- Suitable for hanging scales, weigh hoppers and other weighing devices as well as force measurement devices and test stands

## SPECIFICATIONS

### Article codes, product groups & Status information

Model article-code	CS 150-3P1
Model-Serie	CS P1
Assortment	Sauter
Product Type	Measuring cells
Product group	S-shape load cells
Product usage type	Main item;Accessories/Services
EAN code (Model)	404576 122 1475
Customs tariff number	90249000
CE Label	yes

### Technical data - Primary

Force directions	compression;tension
OIML class	C3
Weighing capacity	150 kg
Max (N)	1,5 kN

### Technical data - Construction

IP Protection	IP67
Material	steel, nickel-plated

Dimensions (W×D×H)	50,8×76,2×20,8 mm
cable length	3 m
Mounting force in	Threaded hole M10
Mounting force out	Threaded hole M10

### Technical data - Power supply

Excitation Voltage min.	5 V
Excitation Voltage max.	12 V

### Technical data - Measuring system

Full scale output	2 mV/V
combined error	0,02%
load cell connection	4-guide
measuring applications	force;mass

### Technical data - Environmental conditions

Usage Temperature (min)	-10 °C
Usage temperature (max)	40 °C

### Technical data - Packing & Shipping

Dimensions packaging (W×D×H)	185×155×60 mm
------------------------------	---------------

Gross weight	0.65 kg
Net weight	0.55 kg
Shipping method	Parcel service
Packaging component - by weight - cardboard	97 g
Delivery time	1 d

## Technical data - Verification

Resolution loadcell (e)	3000 e
-------------------------	--------

## FUNCTIONS

Standard
----------



Option
--------



## ACCESSORIES

Model	Description
YKV-01	IoT-Line Digital Weighing Transmitter KERN YKV-01
CJ P2	Junction Box SAUTER CJ P2
YKV-02	IoT-Line Digital Weighing Transmitter KERN YKV-02
CJ P4PG	Junction Box SAUTER CJ P4PG
AFM 23	Sleeve SAUTER AFM 23
CJ P4	Junction Box SAUTER CJ P4
FS TKZ	Transport case SAUTER FS TKZ
CE WT4-Y1	Analogue Weighing Transmitter SAUTER CE WT4-Y1

## SERVICES

Model	Description
96 1-162	Factory calibration KERN 96 1-162

Model	Description
961-262	Factory calibration KERN 961-262
961-362	Factory calibration KERN 961-362
963-162	DAkkS Calibration KERN 963-162
963-262	DAkkS Calibration KERN 963-262
963-362	DAkkS Calibration KERN 963-362
FS 403	Plug SAUTER FS 403
963-162IV	DAkkS Calibration KERN 963-162IV
963-162V	DAkkS Calibration KERN 963-162V
963-262IV	DAkkS Calibration KERN 963-262IV
963-262V	DAkkS Calibration KERN 963-262V
963-362IV	DAkkS Calibration KERN 963-362IV
963-362V	DAkkS Calibration KERN 963-362V
970-013	Warranty extension KERN (+3 years) 970-013

## RELATED ARTICLES DATA

Model name	Force directions	OIML class	Weighing capacity	Max (N)
CS 25-3P1	compression;tension	C3	25 kg	250 N
CS 50-3P1	compression;tension	C3	50 kg	500 N
CS 100-3P1	compression;tension	C3	100 kg	1 kN
CS 150-3P1	compression;tension	C3	150 kg	1,5 kN
CS 250-3P1	compression;tension	C3	250 kg	2,5 kN
CS 500-3P1	compression;tension	C3	500 kg	5 kN
CS 600-3P1	compression;tension	C3	600 kg	6 kN
CS 750-3P1	compression;tension	C3	750 kg	7,5 kN
CS 1000-3P1	compression;tension	C3	1000 kg	10 kN
CS 1500-3P1	compression;tension	C3	1500 kg	15 kN
CS 2000-3P1	compression;tension	C3	2000 kg	20 kN
CS 2500-3P1	compression;tension	C3	2500 kg	25 kN
CS 5000-3P1	compression;tension	C3	5000 kg	50 kN
CS 7500-3P1	compression;tension	C3	7500 kg	75 kN
CS 10000-3P1	compression;tension	C3	10000 kg	100 kN
CS 15000-3P1	compression;tension	C3	15000 kg	150 kN

Model name	Force directions	OIML class	Weighing capacity	Max (N)
CS 20000-3P1	compression;tension	C3	20000 kg	200 kN
CS 30000-3P1	compression;tension	C3	30000 kg	300 kN