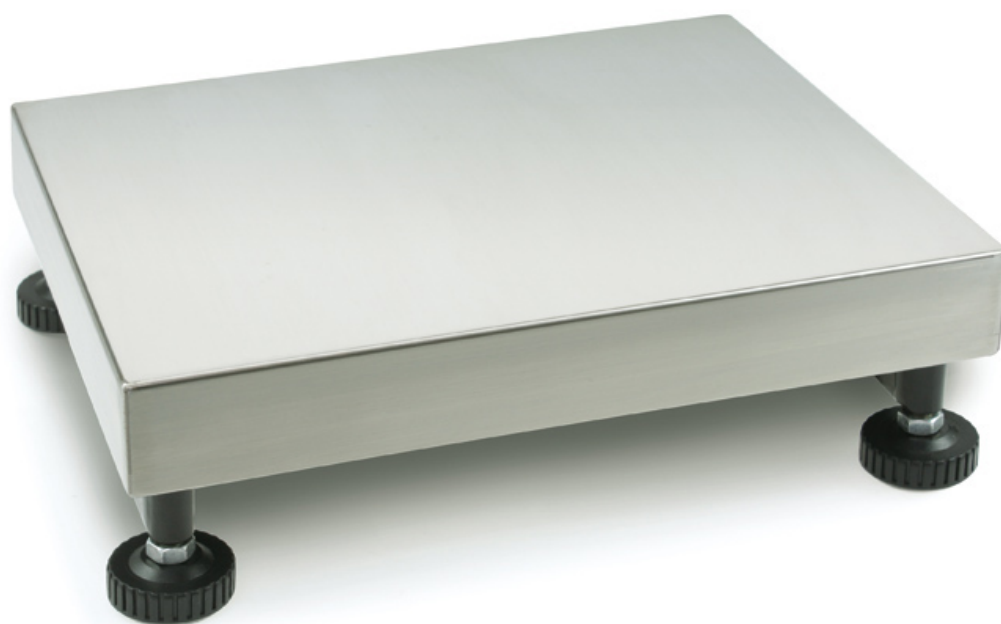


# KERN KFP 300V20M

Platform: weighing plate of stainless steel, painted steel base, silicone-coated aluminium load cell with protection against dust and water splashes IP65



## Article codes, product groups & Status information

|                       |                         |
|-----------------------|-------------------------|
| Model article-code    | KFP 300V20M             |
| Model-Serie           | KFP                     |
| Assortment            | KERN                    |
| Product Type          | Industrial scales       |
| Product group         | Platforms               |
| Product usage type    | Spare part;Main article |
| EAN code (Model)      | 4045761250031           |
| Predecessor Model     | KFP 300V20M-2023a       |
| Planned start date    | 2022-1HJ                |
| Customs tariff number | 90318080                |

## Technical data - Primary

|                              |                |
|------------------------------|----------------|
| Weighing capacity            | 150 kg; 300 kg |
| Readability                  | 10 g           |
| Verification value (e)       | 50 g; 100 g    |
| Minimum load (Min)           | 1 kg; 2 kg     |
| Net weight                   | 18.8 kg        |
| Dimensions weighing platform | 650×500×139 mm |

## Technical data - Construction

|                                    |                 |
|------------------------------------|-----------------|
| Material weighing plate            | Stainless steel |
| Revolving screw feet               | Yes             |
| Weighing surface (d)               | 650×500 mm      |
| Dimensions of weighing plate (W×D) | 650×500 mm      |
| Dimensions weighing platform       | 650×500×139 mm  |

## Functions

IP protection load cell IP65

## Technical data - Measuring system

|                      |          |
|----------------------|----------|
| Readability          | 10 g     |
| load cell connection | 6-Leiter |

## Technical data - Packing & Shipping

|   |                 |
|---|-----------------|
| Dimensions packaging (W×D×H)                | 1050×675×250 mm |
| Gross weight                                | 26 kg           |
| Net weight                                  | 19 kg           |
| Shipping method                             | Parcel service  |
| Packaging component - by weight - cardboard | 3.1 kg          |
| Packaging component - by weight - plastics  | 3.1 kg          |
| Delivery time                               | 1 d             |

## Technical data - Verification

|                               |             |
|-------------------------------|-------------|
| Verification Value E          | 50 g; 100 g |
| Minimum Load Min              | 1 kg; 2 kg  |
| Verification by KERN possible | Yes         |

# KERN KFP 300V20M

Platform: weighing plate of stainless steel, painted steel base, silicone-coated aluminium load cell with protection against dust and water splashes IP65



## Standard



## Factory

