



KERN & Sohn GmbH

Ziegelei 1
D-72336 Balingen
E-Mail: info@kern-sohn.com
www.kern-sohn.com

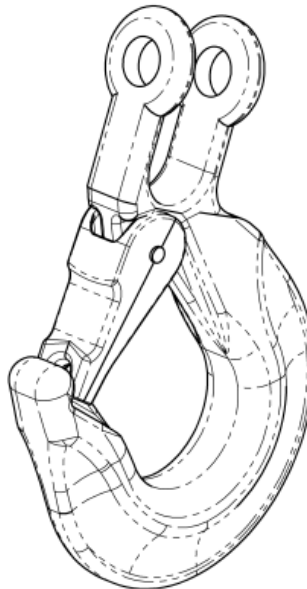
Phone: +49-[0]7433- 9933-0
Fax: +49-[0]7433-9933-149
Internet: www.kern-sohn.com

Installation Instructions

Hooks for crane scales

KERN HFD-A01 / -A02 / -A03

Version 2.0
2025-11
en



HFD-A0x-IA-e-2520



KERN HFD-A01 / -A02 / -A03

Version 2.0 2025-11

Installation instructions for hooks

Contents

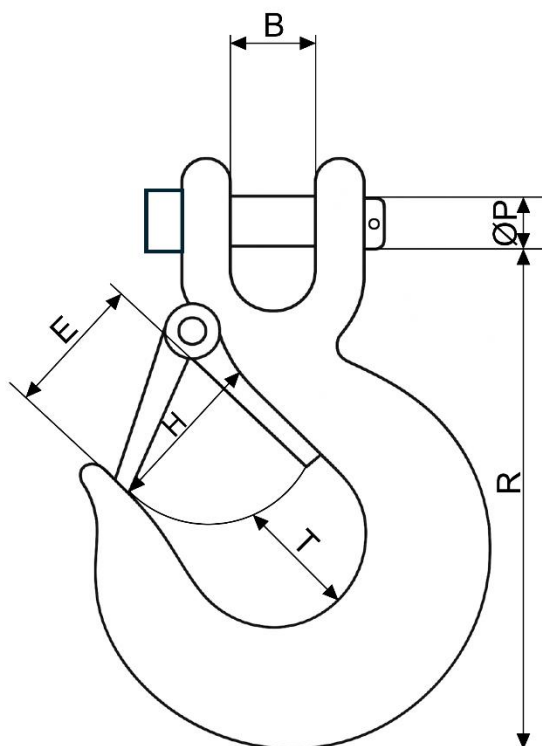
1	General hints	3
2	Dimensions	3
3	Scope of delivery	4
4	Installation	5
5	Regular maintenance and care	8

1 General hints

These installation instructions contain all data for installation of hooks in the crane scales KERN HFD.

HFD 600K-1	HFD-A01
HFD 1T-4	
HFD 3T-3	HFD-A02
HFD 6T-3	HFD-A03
HFD 10T-3	

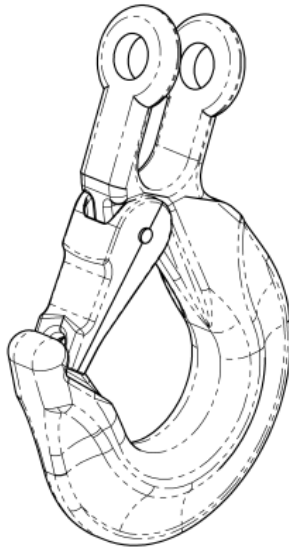
2 Dimensions



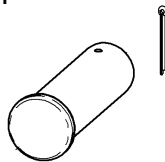
Article	Dimensions mm						Weight kg
	B	E	P	R	T	H	
HFD-A01	19,5	33,0	16,0	101,6	32,0	45,0	1,4
HFD-A02	23,1	39,0	19,0	125,5	37,0	57,0	2,2
HFD-A03	33,3	46,0	25,4	154,5	38,0	62,0	5,5

3 Scope of delivery

- Hook with safety lock



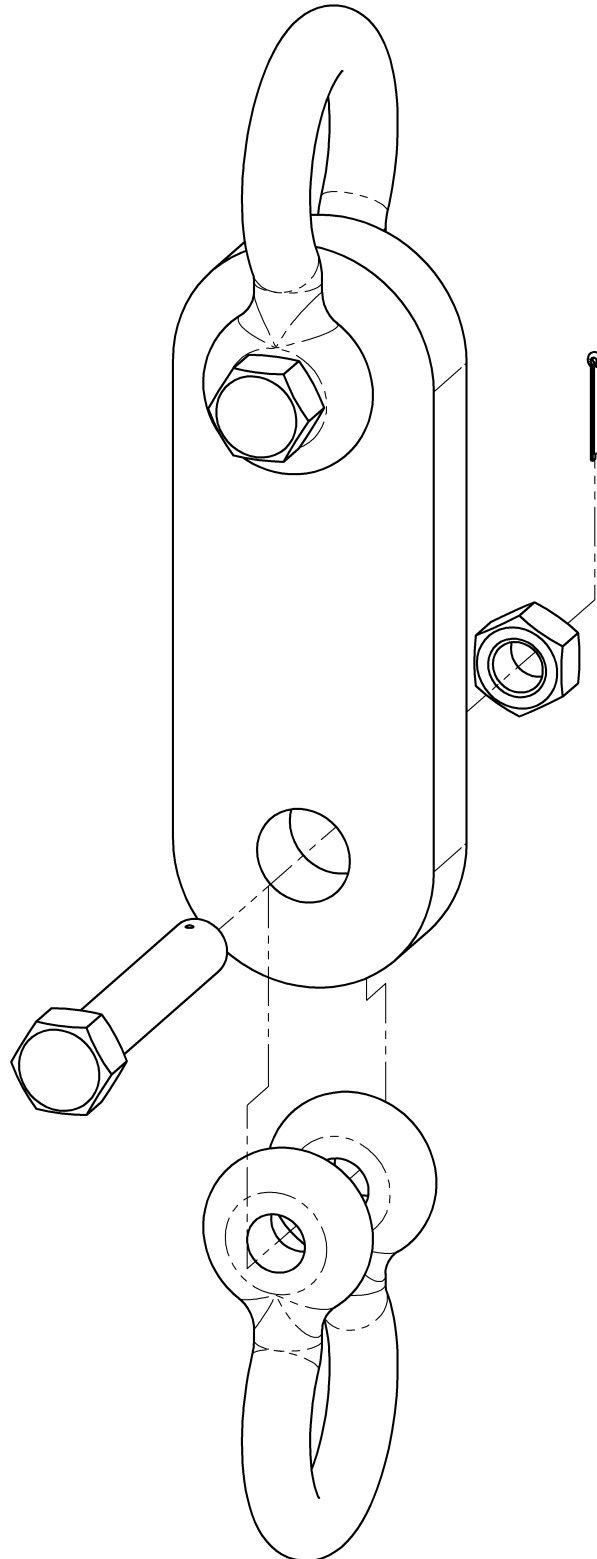
- Bolt and splint pin



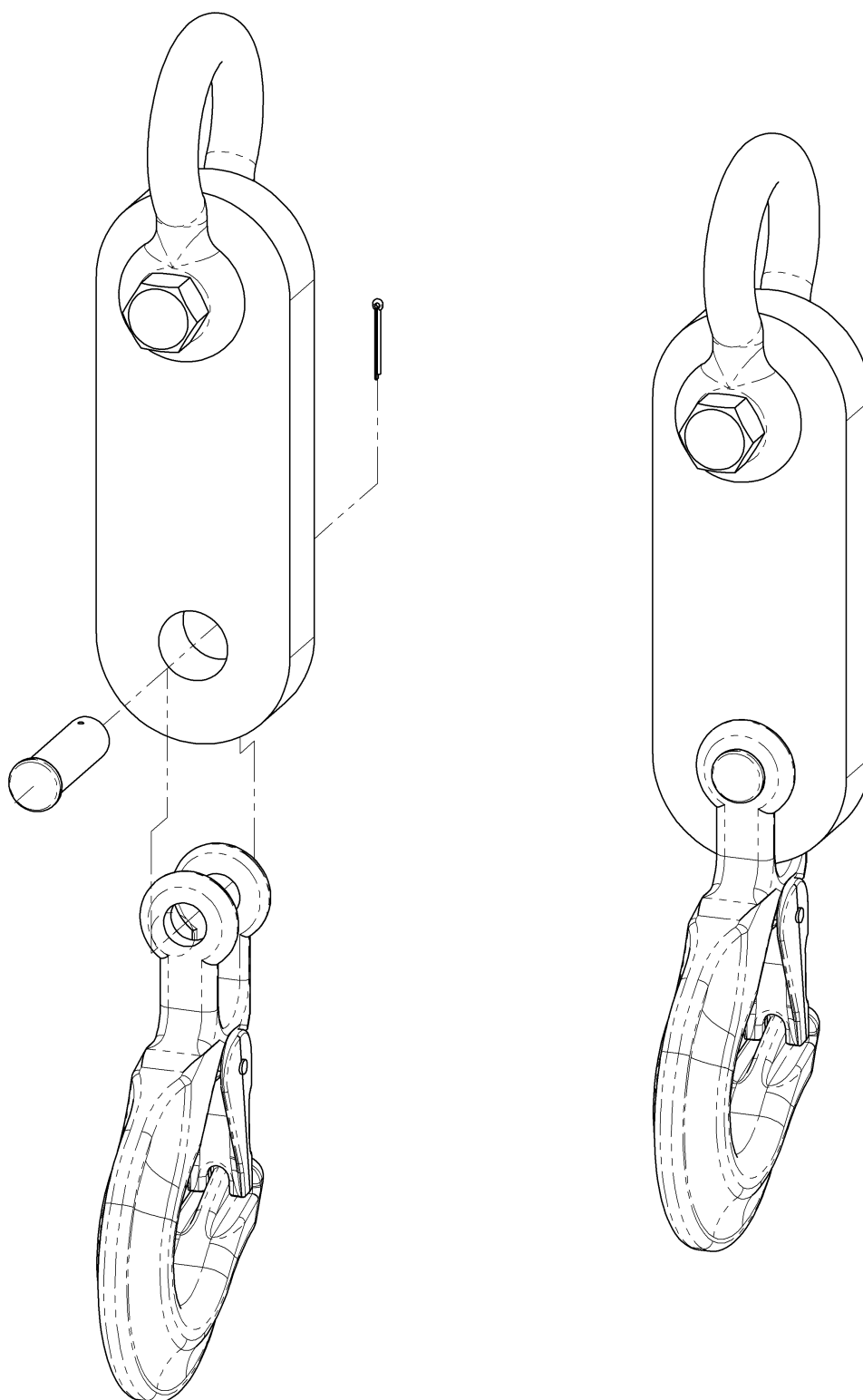
- Installation instructions

4 Installation

1.

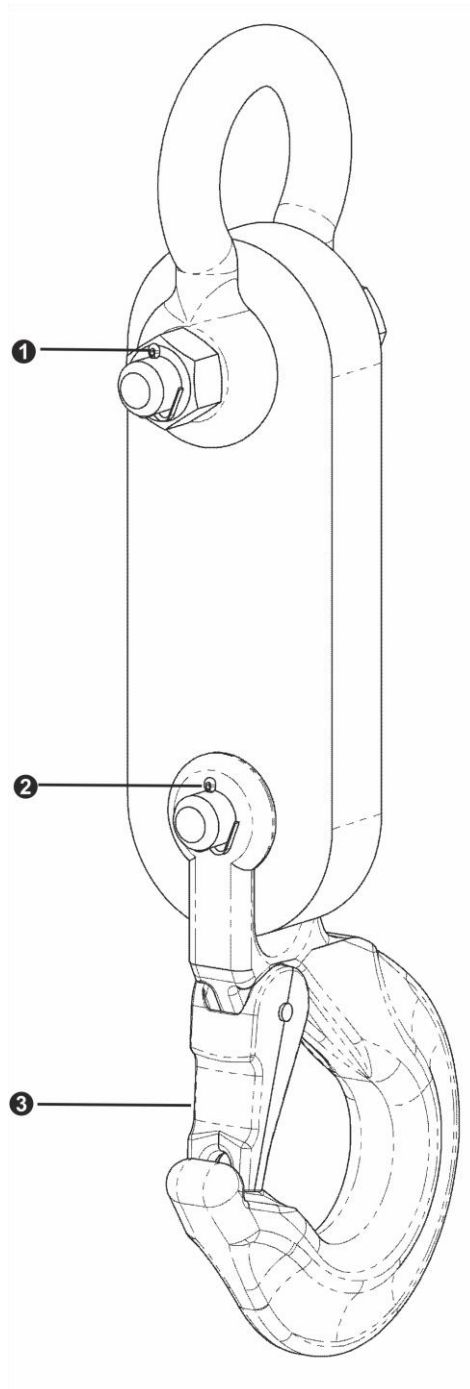


2.



Check after assembly that:

- 1 the upper threaded bolt is fully-tightened and the nut is secured by the split pin.
- 2 the lower bolt is secured by the split pin
- 3 the safety bracket is working properly



5 Regular maintenance and care

Maintenance may only be carried out by a specialist technician with specific training in dealing with load-lifting gear and crane scales.

- + Check the used attachment device regularly for wear and tear, such as e.g. plastic deformation, mechanical damage (unevenness), notches, striation, cracks, corrosion and torsions.
- + Check the application of the safety bracket on the hook, moreover check for fault and correct function
- + Load suspension devices known to have been overloaded or subject to other harmful influences may no longer be used and/or may be re-used only after inspection.