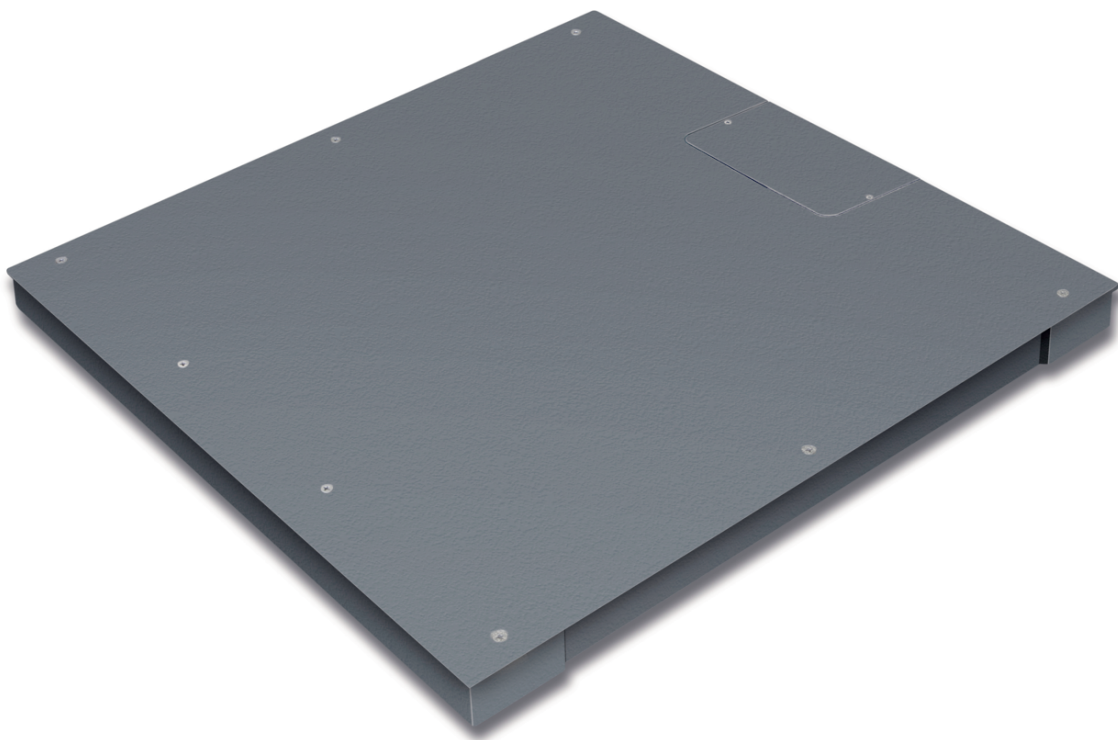


PRODUCT BROCHURE

KERN KFP 3000V20LNM

Date: 11.03.2026

ENGLISH



Platform: weighing plate of stainless steel, painted steel base, silicone-coated aluminium load cell with protection against dust and water splashes IP65

CONTACT

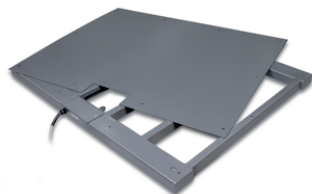
KERN & SOHN GmbH
Ziegelei 1
72336 Balingen
Germany

Phone : +49 7433 9933-0
Fax : +49 7433 9933-149
Email : info@kern-sohn.com
Web : www.kern-sohn.com



Scan here for more
information

PRODUCT SHOWCASE



DESCRIPTION

- Stainless steel-weighing plate
- Painted steel base
- 1 load cell, aluminium, silicone-coated, IP65, OIML-R60-approved, class III, 3000 e
- Level indicator and levelling feet for precise levelling of the scale, fitted as standard

SPECIFICATIONS

Article codes, product groups & Status information

Model article-code	KFP 3000V20LNM
Model-Serie	KFP
Assortment	KERN
Product Type	Industrial balance
Product group	Platforms
Product usage type	Spare part;Main article
EAN code (Model)	4045761493919
Predecessor Model	KFP 3000V20LNM-2024a; KIP 3000V20LM
Customs tariff number	90318080

Country of Origin CN

Technical data - Primary

Weighing capacity	3000 kg
Readability	1 kg
Verification value (e)	1 kg
Minimum load (Min)	20 kg
Net weight	172 kg
Dimension weighing platform (W×D×H)	1500×1500×85 mm

Technical data - Construction

Material weighing plate	steel, powder-coated
-------------------------	----------------------

Revolving screw feet	yes
Weighing surface (d)	1500×1500 mm
Dimensions of weighing plate (W×D)	1500×1500 mm
IP protection platform	IP67
IP protection load cell	IP67



Technical data - Measuring system

load cell connection	6-Leiter
----------------------	----------

Technical data - Packing & Shipping

Dimensions packaging (W×D×H)	1615×1580×360 mm
Gross weight	235 kg
Net weight	175 kg
Shipping method	Freight
Packaging component - by weight - cardboard	1240 g
Packaging component - by weight - wood	60.76 kg
Delivery time	2 d

Technical data - Verification

Verification by KERN possible	yes
-------------------------------	-----

FUNCTIONS

Standard



Factory

ACCESSORIES

Model	Description
BFS-A06N	Pair of base plates KERN BFS-A06N
BFS-A08N	Pit frame KERN BFS-A08N
BFS-A09N	Ramp KERN BFS-A09N

SERVICES

Model	Description
965-232	Verification / Conformity assessment according to NAWI (2014/31/EU) KERN 965-232
963-132	DAkkS Calibration KERN 963-132
965-415	Assembly of components (> 2900 kg - 6000 kg) 965-415
970-109	Warranty extension KERN (+2 years) 970-109

SPARE PARTS

Model	Description
RKFPV20-9003	Washer KERN RKFPV20-9003
RKFPV20-8002	Level bubble RKFPV20-8002
RKFP-5003	Cable RKFP-5003
RKFP-1007	Load cell KERN RKFP-1007
RKFP-2001	RKFP-2001
RKFP-8005	Adjustable base foot RKFP-8005

RELATED ARTICLES DATA

Model name	Weighing capacity	Readability	Verification value (e)	Minimum load (Min)	Net weight	Dimension weighing platform (W×D×H)
KFP 150V30LM	150 kg	5 g	50 g	1 kg	24.3 kg	650×500×136 mm
KFP 60V30LM	60 kg	2 g	20 g	400 g	13.3 kg	500×400×117 mm
KFP 60V30XLM	60 kg	2 g	20 g	400 g	22 kg	650×500×136 mm
KFP 150V20LM	60 kg; 150 kg	5 g	20 g; 50 g	400 g; 1 kg	18.8 kg	650×500×139 mm

Model name	Weighing capacity	Readability	Verification value (e)	Minimum load (Min)	Net weight	Dimension weighing platform (W×D×H)
<u>KFP 150V20M</u>	60 kg; 150 kg	5 g	20 g; 50 g	400 g; 1 kg	6.58 kg	500×400×127 mm
<u>KFP 150V30LM-2022e</u>	150 kg	10 g	50 g	1 kg	20.5 kg	650×500×139 mm
<u>KFP 150V30M</u>	150 kg	10 g	50 g	1 kg	9.8 kg	500×400×120 mm
<u>KFP 150V30SM</u>	150 kg	10 g	50 g	1 kg	9.35 kg	400×300×111 mm
<u>KFP 15V20LM</u>	6 kg; 15 kg	500 mg	2 g; 5 g	40 g; 100 g	6.3 kg	400×300×117 mm
<u>KFP 15V20M</u>	6 kg; 15 kg	500 mg	2 g; 5 g	40 g; 100 g	3.8 kg	300×240×109 mm
<u>KFP 15V30M</u>	15 kg	1 g	5 g	100 g	7.9 kg	300×240×107 mm
<u>KFP 300V20M</u>	150 kg; 300 kg	10 g	50 g; 100 g	1 kg; 2 kg	18.8 kg	650×500×139 mm
<u>KFP 300V30M</u>	300 kg	20 g	100 g	2 kg	20.5 kg	650×500×139 mm
<u>KFP 30V20M</u>	15 kg; 30 kg	1 g	5 g; 10 g	20 g	6.3 kg	400×300×117 mm
<u>KFP 30V20SM</u>	15 kg; 30 kg	1 g	5 g; 10 g	100 g; 200 g	3.8 kg	300×240×109 mm
<u>KFP 30V30M</u>	30 kg	2 g	10 g	200 g	7.2 kg	400×300×111 mm
<u>KFP 30V30SM</u>	30 kg	2 g	10 g	200 g	5 kg	300×240×107 mm
<u>KFP 3V20M</u>	3 kg	100 mg	1 g	20 g	3.3 kg	230×230×106 mm
<u>KFP 600V20AM</u>	600 kg	20 g	200 g	4 kg	41.8 kg	800×600×192 mm
<u>KFP 60V20LM</u>	30 kg; 60 kg	2 g	10 g; 20 g	200 g; 400 g	9.8 kg	500×400×127 mm
<u>KFP 60V20M</u>	30 kg; 60 kg	2 g	10 g; 20 g	200 g; 400 g	6.3 kg	400×300×117 mm
<u>KFP 60V30LM-2022e</u>	60 kg	5 g	20 g	400 g	9.8 kg	500×400×120 mm

ENGLISH

Model name	Weighing capacity	Readability	Verification value (e)	Minimum load (Min)	Net weight	Dimension weighing platform (W×D×H)
<u>KFP 60V30M</u>	60 kg	5 g	20 g	400 g	7.2 kg	400×300×111 mm
<u>KFP 60V30XLM-2022e</u>	60 kg	5 g	20 g	400 g	20.5 kg	650×500×139 mm
<u>KFP 6V20LM</u>	6 kg	200 mg	1 g; 2 g	20 g; 40 g	3.8 kg	300×240×109 mm
<u>KFP 6V20M</u>	6 kg	200 mg	1 g; 2 g	20 g; 40 g	4.4 kg	230×230×106 mm
<u>KFP 6V40M</u>	6 kg	500 mg	1 g; 2 g	20 g	6.52 kg	300×240×107 mm
<u>KFP 15V40M</u>	15 kg	1 g	2 g; 5 g	40 g	4.8 kg	300×240×107 mm
<u>KFP 15V40LM</u>	15 kg	1 g	2 g; 5 g	40 g	6.1 kg	400×300×111 mm
<u>KFP 30V40M</u>	30 kg	2 g	5 g; 10 g	100 g	7.7 kg	400×300×111 mm
<u>KFP 30V40LM</u>	30 kg	2 g	5 g; 10 g	100 g	10.2 kg	500×400×120 mm
<u>KFP 60V40M</u>	60 kg	5 g	10 g; 20 g	200 g	9.1 kg	400×300×123 mm
<u>KFP 60V40LM</u>	60 kg	5 g	10 g; 20 g	200 g	10.2 kg	500×400×126 mm
<u>KFP 150V40M</u>	150 kg	10 g	20 g; 50 g	400 g	11.7 kg	500×400×126 mm
<u>KFP 150V40LM</u>	150 kg	10 g	20 g; 50 g	400 g	20 kg	650×500×139 mm
<u>KFP 300V40M</u>	300 kg	20 g	50 g; 100 g	1 kg; 2 kg	20 kg	650×500×139 mm
<u>KFP 30V20LM</u>	15 kg; 30 kg	1 g	5 g; 10 g	20 g	10.53 kg	500×400×127 mm
<u>KFP 1500V20NM</u>	1500 kg	500 g	500 g	10 kg	147 kg	1500×1250×85 mm
<u>KFP 1500V20SNM</u>	1500 kg	500 g	500 g	10 kg	96 kg	1000×1000×85 mm
<u>KFP 1500V40M</u>	1500 kg	500 g	500 g	10 kg	146 kg	1500×1250×85 mm
<u>KFP 1500V40SM</u>	1500 kg	500 g	500 g	10 kg	95 kg	1000×1000×85 mm

Model name	Weighing capacity	Readability	Verification value (e)	Minimum load (Min)	Net weight	Dimension weighing platform (W×D×H)
<u>KFP 3000V20LNM</u>	3000 kg	1 kg	1 kg	20 kg	172 kg	1500×1500×85 mm
<u>KFP 3000V20NM</u>	3000 kg	1 kg	1 kg	20 kg	147 kg	1500×1250×85 mm
<u>KFP 3000V40M</u>	3000 kg	1 kg	1 kg	20 kg	145 kg	1500×1250×85 mm
<u>KFP 6000V20M</u>	6000 kg	2 kg	2 kg	40 kg	223 kg	1500×1500×123 mm
<u>KFP 600V20NM</u>	600 kg	200 g	200 g	4 kg	147 kg	1500×1250×85 mm
<u>KFP 600V20SNM</u>	600 kg	200 g	200 g	4 kg	95 kg	1000×1000×85 mm
<u>KFP 600V40SM</u>	600 kg	200 g	200 g	4 kg	95 kg	1000×1000×85 mm

ENGLISH