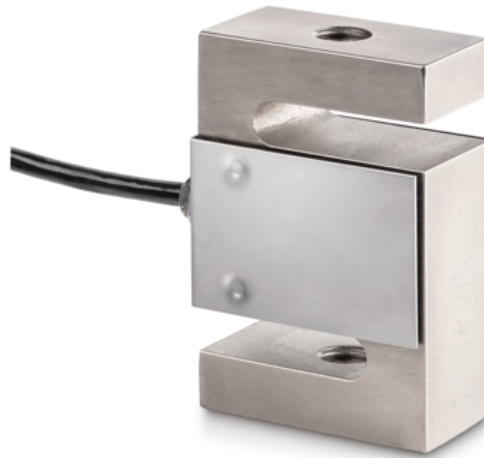


KERN CS 100-3P1

4-wire "S" measuring cell made of nickel-plated steel for force and mass measurement



Article codes, product groups & Status information

Model article-code	CS 100-3P1
Model-Serie	CS P1
Assortment	Sauter
Product Type	Measuring cells
Product group	S-shape load cells
Product usage type	Main item;Accessories/Services
EAN code (Model)	4045761221444
Planned start date	2019-1HJ
Customs tariff number	90249000
CE Label	Yes

Technical data - Primary

Force directions	Compression;tension
OIML class	C3
Weighing capacity	100 kg
Max (N)	1 kN

Technical data - Construction

IP Protection	IP67
Material	Steel, nickel-plated
Dimensions	50,8×76,2×20,8 mm
cable length	3 m
Mounting force in	Threaded hole M10
Mounting force out	Threaded hole M10

Technical data - Power supply

Excitation Voltage min.	5 V
Excitation Voltage max.	12 V

Technical data - Measuring system

Full scale output	2 mV/V
combined error	0,02%
load cell connection	4-guide
measuring applications	Force;mass

Technical data - Environmental conditions

Usage Temperature (min)	-10 °C
Usage temperature (max)	40 °C

Technical data - Packing & Shipping

Dimensions packaging (W×D×H)	185×155×60 mm
Gross weight	0.70 kg
Net weight	0.60 kg
Shipping method	Parcel service
Packaging component - by weight - cardboard	105 g
Delivery time	1 d

Technical data - Verification

Resolution loadcell (e)	3000 e
-------------------------	--------

Functions

Standard

KERN CS 100-3P1

4-wire "S" measuring cell made of nickel-plated steel for force and mass measurement



Option

