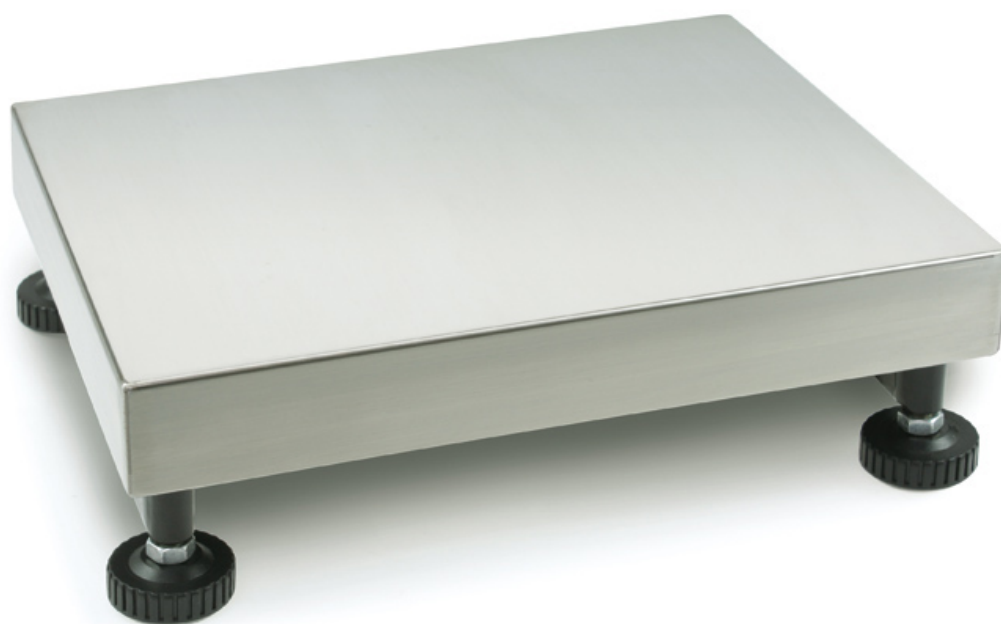


# KERN KFP 6V20LM

Platform: weighing plate of stainless steel, painted steel base, silicone-coated aluminium load cell with protection against dust and water splashes IP65



## Article codes, product groups & Status information

Model article-code	KFP 6V20LM
Model-Serie	KFP
Assortment	KERN
Product Type	Industrial scales
Product group	Platforms
Product usage type	Spare part;Main article
EAN code (Model)	4045761250116
Predecessor Model	KFP 6V20LM-2020a
Planned start date	2022-1HJ
Customs tariff number	90318080

## Technical data - Primary

Weighing capacity	6 kg
Readability	200 mg
Verification value (e)	1 g; 2 g
Minimum load (Min)	20 g; 40 g
Net weight	3.8 kg
Dimensions weighing platform	300×240×109 mm

## Technical data - Construction

Material weighing plate	Stainless steel
Revolving screw feet	Yes
Weighing surface (d)	300×240 mm
Dimensions of weighing plate (W×D)	300×240 mm
Dimensions weighing platform	300×240×109 mm

## Functions

IP protection load cell	IP65
-------------------------	------

## Technical data - Measuring system

Readability	200 mg
load cell connection	4-guide

## Technical data - Packing & Shipping

Dimensions packaging (W×D×H)	700×410×230 mm
Gross weight	7 kg
Net weight	3.8 kg
Shipping method	Parcel service
Packaging component - by weight - cardboard	832 g
Packaging component - by weight - styrofoam	424 g
Delivery time	1 d

## Technical data - Verification

Verification Value E	1 g; 2 g
Minimum Load Min	20 g; 40 g
Verification by KERN possible	Yes

# KERN KFP 6V20LM

Platform: weighing plate of stainless steel, painted steel base, silicone-coated aluminium load cell with protection against dust and water splashes IP65



Standard



Factory

