

PRODUCT BROCHURE

KERN SCD-4.0-DL

Date: 18.03.2025

ENGLISH



Flexible recording or transfer of measurements, particularly to Microsoft® Excel or Access

CONTACT

KERN & SOHN GmbH

Ziegelei 1

72336 Balingen

Germany

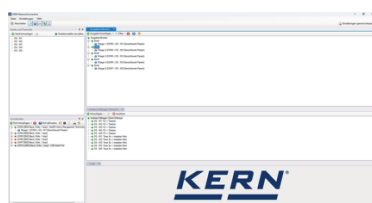
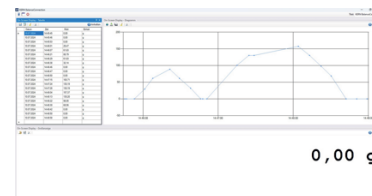
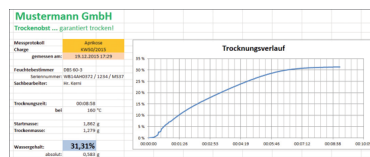
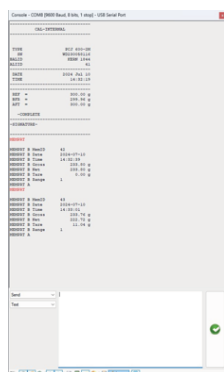
Phone : +49 7433 9933-0

Fax : +49 7433 9933-149

Email : info@kern-sohn.com

Web : www.kern-sohn.com

PRODUCT SHOWCASE



Rezept									
Datum	Start	Endzeit	Seitenlayout	Formeln	Daten	Überprüfen	Ausdrucken	Automatisieren	Hilfe
G15									
A	B	C	D	E	F	G	H	I	J
4									
5	PSI 4200-204	Vaseline	200 g	200,47 g	2023-05-07 12:15	0,47 g	0,23%	200,47 g	
6	(große Mengen)	Alkohol	400 g	411,21 g	2023-05-07 12:15	11,21 g	2,80%	411,68 g	
7		Wasser	1000 g	1002,39 g	2023-05-07 12:15	2,39 g	0,24%	1.004,77 g	
8	ABi 80-804	Drogenpulver	5,000 g	4,9999 g	2023-05-07 12:15	-0,0007 g	-0,01%	1.429,0893 g	
9	(kleine Mengen)	Therapiepulver	1,000 g	0,9998 g	2023-05-07 12:15	-0,0010 g	-0,10%	1.429,0877 g	
10		Boxen	0,001 g	0,0011 g	2023-05-07 12:15	0,0001 g	10,00%	1.429,0858 g	
Rezept									

ENGLISH

DESCRIPTION

- For operating systems Windows 10 (20H2) and newer, 11
- .NET Framework 4.8.1 required
- Full administration rights are required for the installation
- Supports balances and measuring devices with USB, RS-232, RS 485, Bluetooth, LAN or WiFi & 160;network (TCP/UDP/IP)
- Highly flexible formatting and design of the output (any order and positioning, formatting and rounding), particularly recording of date and time for every value transferred, if required
- Any number of devices/interfaces can be connected, as well as simultaneous and synchronised recording of several balances
- Key-activated or time-controlled interrogation of measurements or trigger of device functions, also for continuous recording
- The interface protocols for KERN balances are already predefined (standard configuration). Support of other balances is possible through flexible configuration
- Compatible interface cable included when you order a KERN balance at the same time

- Many different transfer and recording options:
 - Microsoft Excel/Access/Word in the foreground or background
 - Other Windows applications (through key simulation), e.g. shipping software or ERP system (SAP, Sage, etc.)
 - File recording (e.g. as text or CSV file)
 - Print out on text or label printer
- Screen output such as large display, line chart (drying curve for moisture analyzer), histogram, etc.
- Benefits:
 - Typing errors during manual transfer, for example, are avoided
 - Automatic recording, e.g. for long-term tests
 - GLP-compliant lab software
 - Can be used across different branches and applications
- Scope of supplies: Download link for 1 license

SPECIFICATIONS

Article codes, product groups & Status information

Model article-code	SCD-4.0-DL
Model-Serie	SCD
Assortment	KERN
Product Type	Software
Product group	BalanceConnection
Product usage type	Main item;Accessories/Services
EAN code (Model)	404576 12 12206
Predecessor Model	SCD-4.0; SCD-4.0S05
Customs tariff number	852349 10

Standard



Technical data - Packing & Shipping

Delivery time	1 d
---------------	-----

FUNCTIONS