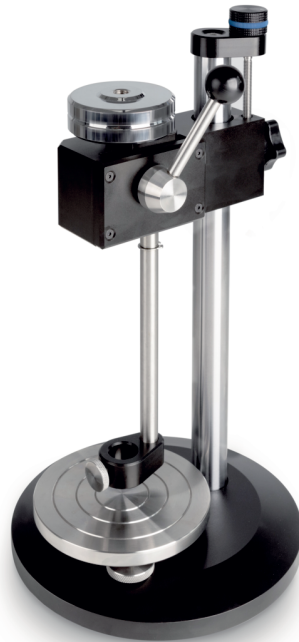


PRODUCT BROCHURE

SAUTER TI-HEA

Date: 11.03.2026

ENGLISH



Test stand for hardness testing Shore A and D

CONTACT

KERN & SOHN GmbH
Ziegelei 1
72336 Balingen
Germany

Phone : +49 7433 9933-0
Fax : +49 7433 9933-149
Email : info@kern-sohn.com
Web : www.kern-sohn.com



Scan here for more
information

DESCRIPTION

- High-quality test stand for Shore hardness testing of plastics in industry and the laboratory
- One test stand for two hardness scales: You just need to screw the additional weight TI-HE onto the TI-HEA test bench, so that this can then also be used for Shore D hardness testing, see accessories
- Steel plate, can be levelled for accurate measuring
- Level adjustment: For the precise levelling of the steel base plate, e.g. for the correction of inhomogeneous test objects
- Mechanical construction: Robust design enables accurate measuring movements
- The accuracy of the displayed result is higher than in a manual operated test
- Simple handling means that you can achieve repeatable measuring results:
Operation:
 1. The hardness testing device SAUTER HEA is fitted in a suspended position
 2. The test stand can be aligned using 2 screw mechanisms below the Shore hardness tester
 3. The test object is placed on the round test stand directly below the measuring tip of the hardness testing device
 4. By pressing the lever down, the test weight will be released, and this then presses the measuring tip into the test object with its own weight
- Hardness tester is not included with delivery

SPECIFICATIONS

Article codes, product groups & Status information

Model article-code	TI-HEA
Model-Serie	TI
Assortment	Sauter
Product Type	Hardness measurement
Product group	Hardness testers (Shore)
Product usage type	Main item;Accessories/Services
EAN code (Model)	4045761366176

Customs tariff number 90248000

Country of Origin CN

Technical data - Primary

Hardness scales Shore A

Technical data - Construction

Material housing steel, lacquered

Technical data - Measuring system

Test force Hardness measurement 10 N

Technical data - Environmental conditions

Maximum storage temperature	40 °C
-----------------------------	-------

Technical data - Packing & Shipping

Dimensions packaging (W×D×H)	250×250×400 mm
Gross weight	7 kg
Net weight	6 kg
Shipping method	Parcel service
UN number	No dangerous goods
Packaging component - by weight - cardboard	340 g
Packaging component - by weight - styrofoam	340 g
Delivery time	1 d

FUNCTIONS

Standard



ACCESSORIES

Model	Description
TI-HE	Additional SAUTER weight TI-HE

SERVICES

Model	Description
970-104	Warranty extension KERN (+2 years) 970-104