

PRODUCT BROCHURE

KERN SET-04

Date: 18.03.2025

ENGLISH

Software EasyTouch

SET-04
Density

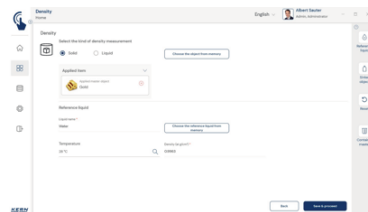
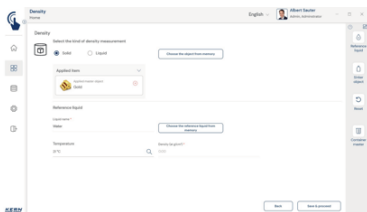
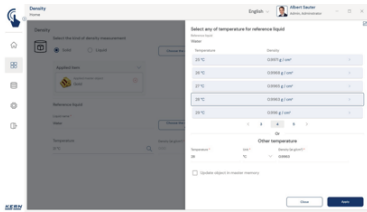
EasyTouch Density – Density determination function

CONTACT

KERN & SOHN GmbH
Ziegelei 1
72336 Balingen
Germany

Phone : +49 7433 9933-0
Fax : +49 7433 9933-149
Email : info@kern-sohn.com
Web : www.kern-sohn.com

PRODUCT SHOWCASE



DESCRIPTION

- Note: Prerequisite for this set is the basic program SET-01 Base
- Guidance through density determination of solid matter and liquids is particularly user-friendly and uses graphics, the density is calculated and output immediately
- The density function permits professional determination of density of solid objects and liquids in accordance with the gravimetric-Archimedean principle. To do this, you would typically use a precision balance with [d] = 0.01 g or 0.001 g or an analytical balance with [d] = 0.1 mg and density determination kit
- For samples, which, due to their size or shape, do not fit in the sample pan or beaker of the density kit, we recommend density determination using a balance with a suspended weighing device
- Determining density of solids using buoyancy: Selection of predefined liquid media is also possible, as well as the definition of individual liquid media with their specific density at a specific temperature. This means that individual liquid media at individual temperatures can be added with their specific density values.
- Determining densities of liquids using special plummets (optional) with defined volume Individual plummets can also be created and stored in the master data memory
- Predefined workflow supports the user in a step-by-step procedure to determine density. In this way, errors in the work sequence and calculation errors are kept to a minimum

- PC print function and barcode scanning function: By operating KERN EasyTouch in a Windows® or Android™ environment you can use the full PC/tablet accessory infrastructure. In particular, standard Windows printers and PC label printers can print out extensive counting slips or compact adhesive labels with the count result to suit your requirements
- ID security offers the possibility of saving every density result obtained with a unique ID number (Dynamic Object ID) and an ID name (Dynamic Object Name)

Options

- The central data memory function Save Server (SET-10) for additional storage of all measurement data in a central, local server directory. By doing this the measurement data of all connected EasyTouch weighing systems as well as from all installed EasyTouch functions will be stored. A particular benefit of doing this for those users with several weighing systems is that all weighing data is consolidated in just one database and you can search for individual measurement data from several balances in just one table. The Save Server data memory is also tamper-proof and cannot be changed
- Sets for density determination for the KERN precision balance being used, can be retrofitted. KERN will be happy to help you select the right product
- Plummet for determining the density of liquids with defined volume, KERN YDB-A04

License information

- Licensing: One license can be operated on up to four terminal devices (PC, laptop, tablet) at the same time, working independently
- User: You can store as many users as you need in one license
- Balances: You can store and operate as many balances as you need in one license
- Communication between balance/terminal device: The balance(s) can communicate with the PC, laptop or tablet by serial connection, USB, Bluetooth, Ethernet or WiFi

SPECIFICATIONS

Article codes, product groups & Status information

Model article-code	SET-04
Model-Serie	ETS
Assortment	KERN
Product Type	Software
Product group	EasyTouch

Product usage type	Main item;Accessories/Services
--------------------	--------------------------------

EAN code (Model)	404576 136047 1
Predecessor Model	SET-04-2021a
Customs tariff number	852349 10

Technical data - Packing & Shipping

Delivery time	1 d
---------------	-----

FUNCTIONS

Standard



Option



SOFTWARES

Model	Description
SET-10	KERN EasyTouch SET-10 Save Server
SET-14	KERN EasyTouch SET-14 Individual Print
SET-411	KERN EasyTouch SET-411 Hotkeys