

## PRODUCT BROCHURE

# KERN SCD-4.0-PRO-DL-AS05

Date: 03.04.2025

ENGLISH



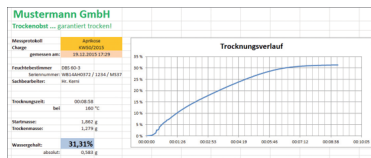
Flexible recording or transfer of measurements, particularly to Microsoft® Excel or Access

## CONTACT

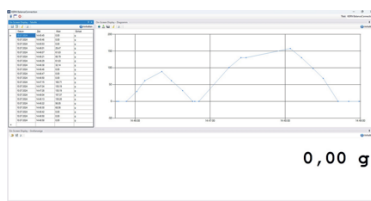
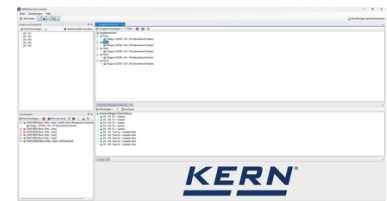
KERN & SOHN GmbH  
Ziegelei 1  
72336 Balingen  
Germany

Phone : +49 7433 9933-0  
Fax : +49 7433 9933-149  
Email : [info@kern-sohn.com](mailto:info@kern-sohn.com)  
Web : [www.kern-sohn.com](http://www.kern-sohn.com)

## PRODUCT SHOWCASE



Substanz	Datum / Uhrzeit	Differenz	Abweichung	Gesamt
Vaseline	2023-05-07 12:15	6.47 g	0.00%	200.47 g
Alkohol	2023-05-07 12:15	11.21 g	2.80%	611.68 g
Wasser	2023-05-07 12:15	2.39 g	0.34%	1.634.07 g
Droge	2023-05-07 12:15	-0.007 g	-0.01%	1.633.063 g
Theobromin	2023-05-07 12:15	-0.0015 g	-0.18%	1.632.0617 g
Reine	2023-05-07 12:15	0.0001 g	0.00%	1.632.0608 g



Substanz	Datum / Uhrzeit	Differenz	Abweichung	Gesamt
Vaseline	2023-05-07 12:15	6.47 g	0.00%	200.47 g
Alkohol	2023-05-07 12:15	11.21 g	2.80%	611.68 g
Wasser	2023-05-07 12:15	2.39 g	0.34%	1.634.07 g
Droge	2023-05-07 12:15	-0.007 g	-0.01%	1.633.063 g
Theobromin	2023-05-07 12:15	-0.0015 g	-0.18%	1.632.0617 g
Reine	2023-05-07 12:15	0.0001 g	0.00%	1.632.0608 g

ENGLISH

## DESCRIPTION

- For operating systems Windows 10 (20H2) and newer, 11
- .NET Framework 4.8.1 required
- Full administration rights are required for the installation
- Supports balances and measuring devices with USB, RS-232, RS 485, Bluetooth, LAN or WiFi & #160; network (TCP/UDP/IP)
- Highly flexible formatting and design of the output (any order and positioning, formatting and rounding), particularly recording of date and time for every value transferred, if required
- Any number of devices/interfaces can be connected, as well as simultaneous and synchronised recording of several balances
- Key-activated or time-controlled interrogation of measurements or trigger of device functions, also for continuous recording
- The interface protocols for KERN balances are already predefined (standard configuration). Support of other balances is possible through flexible configuration
- Compatible interface cable included when you order a KERN balance at the same time

- Many different transfer and recording options:
  - Microsoft Excel/Access/Word in the foreground or background
  - Other Windows applications (through key simulation), e.g. shipping software or ERP system (SAP, Sage, etc.)
  - File recording (e.g. as text or CSV file)
  - Print out on text or label printer
- Additional features of the BalanceConnection PRO version::
  - ODBC/SQL databases such as SQL Server or MySQL
  - Transfer to HTTP Webservices/Web forms
  - Histogram
  - Enables the connection of medical balances to practice EDP systems using the device data transfer protocol (GDT) and also the HL7 protocol, on request
  - Implementation of programs/scripts using freely-definable command lines
  - Command sequences
  - Defining the conditions for specific events and the reaction to these events
  - Filter for stability recognition (configurable value storage)
  - Central configuration repository, e.g. on the network
  - On-screen displays with configurable user interface for flexible balance operation
- Benefits
  - Ideal software where weighing data which has been collected needs to be transferred to a Windows PC
  - Particularly suitable for professional integration of weighing systems into existing networks where there is a high demand for automated data transfer and further processing, for integration of databases
  - Automatic recording, e.g. for long-term tests
  - GLP-compliant lab software
  - For each license, you can use as many balances as you need at one PC/workstation
  - Can be used across different branches and applications
- Scope of supplies: Download link for 5 licenses

## SPECIFICATIONS

### Article codes, product groups & Status information

Model article-code	SCD-4.0-PRO-DL-AS05
Model-Serie	SCD
Assortment	KERN
Product Type	Software
Product group	BalanceConnection

Product usage type	Main item;Accessories/Services
EAN code (Model)	4045761488724
Predecessor Model	SCD-4.0; SCD-4.0-PROS05; SCD-4.0S05
Customs tariff number	85234910

### Technical data - Packing & Shipping

Delivery time	1 d
---------------	-----