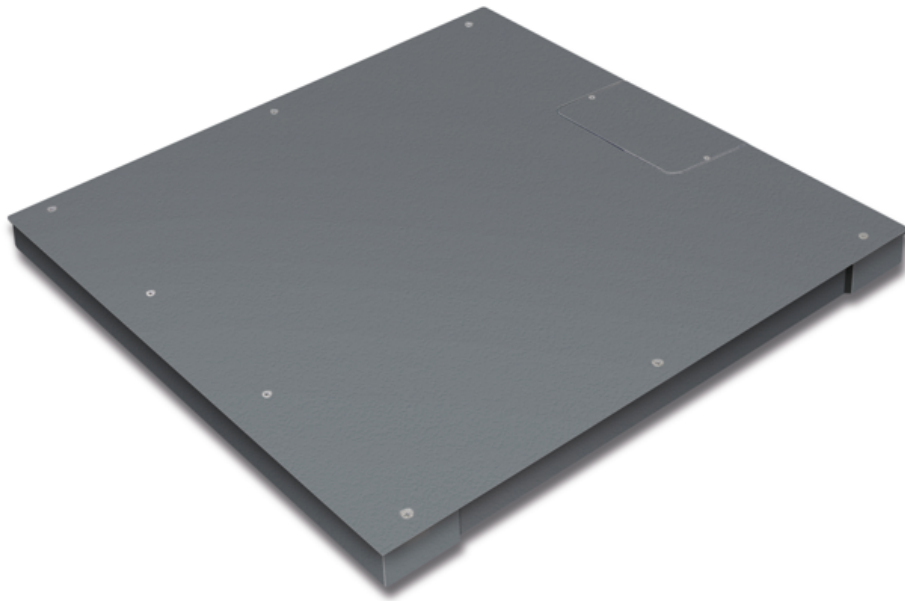


# KERN KFP 3000V20LNM

Platform: weighing plate of stainless steel, painted steel base, silicone-coated aluminium load cell with protection against dust and water splashes IP65

# KERN®



## Article codes, product groups & Status information

Model article-code	KFP 3000V20LNM
Model-Serie	KFP
Assortment	KERN
Product Type	Industrial balance
Product group	Platforms
Product usage type	Spare part;Main article
EAN code (Model)	4045761493919
Predecessor Model	KFP 3.000V20LNM-2.024a; KIP 3.000V20LM
Planned start date	2026-1HJ
Customs tariff number	90318080
Country of Origin	CN

## Technical data - Primary

Weighing capacity	3.000 kg
Readability	1 kg
Verification value (e)	1 kg
Minimum load (Min)	20 kg
Net weight	172 kg
Dimension weighing platform (W×D×H)	1.500×1.500×85 mm

## Technical data - Construction

Material weighing plate	Steel, powder-coated
Revolving screw feet	Yes

## Functions

Standard

Weighing surface (d)	1.500×1.500 mm
Dimensions of weighing plate (W×D)	1.500×1.500 mm
IP protection platform	IP67
IP protection load cell	IP67

## Technical data - Measuring system

load cell connection	6-Leiter
----------------------	----------

## Technical data - Packing & Shipping

Dimensions packaging (W×D×H)	1.615×1.580×360 mm
Gross weight	235 kg
Net weight	175 kg
Shipping method	Freight
Packaging component - by weight - cardboard	1.240 g
Packaging component - by weight - wood	60,76 kg
Delivery time	2 d

## Technical data - Verification

Verification by KERN possible	Yes
-------------------------------	-----

# KERN KFP 3000V20LNM



Platform: weighing plate of stainless steel, painted steel base, silicone-coated aluminium load cell with protection against dust and water splashes IP65



Factory

