

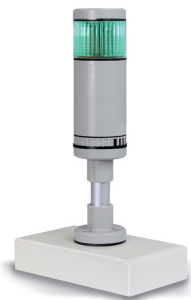


**Large Display
KERN YKD-A02**

Technical data

With superior display size, digit height 3" (76 mm). Luminescent, red LED display for easy reading of weight, even from a distance or under poor lighting conditions. 6 segments, mains connection as standard (230 V, EU/GB), connection using RS-232 data interface, dimensions W×D×H 541×55×180 mm.

Suitable for serie UFA



**Signal Lamp
KERN CFS-A03**

Technical data

Signal lamp for visual support of weighing with tolerance range. Three-colour LED, red, green, yellow. Power supply via balance using RS-232. Total dimensions W×D×H 100×180×300 mm

Suitable for series BID, CDS, CKE, CPB-N, DS, FCB, FKB, IFS, IFC, IOC, IXC, KFB-TM, KFN-TM, KIB-TM, NFC, SFB, SXC, UFA, UFC



**Power Supply Adapter Set
KERN YKA-02**

Technical data

From standard EU to GB/US/AUS/CH etc. Four pieces. Ideal for devices with Class II protection (not earthed). Ideal for Euro moulded plug



**2nd RS-232 Data Interface
KERN CFS-A04**

Technical data

Separate Y cable, e.g. for simultaneous connection of a printer and a signal lamp.

Suitable for series CFS, CPB-N, KFB-TM, UFA, SFB



**RS-232/USB Adapter
KERN AFH 12**

Technical data

To connect peripheral devices with USB connection, fits on all balances and measuring instruments with RS-232 port.

Please order the appropriate RS-232 interface cable for your balance at the same time

Scope of delivery: Converter cable, CD with driver