

PRODUCT BROCHURE

SAUTER TI-DL

Date: 09.03.2026

ENGLISH



Lever operated test stand for hardness testing with base plate made of glass

CONTACT

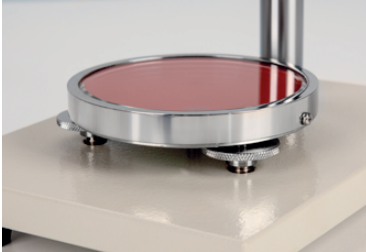
KERN & SOHN GmbH
Ziegelei 1
72336 Balingen
Germany

Phone : +49 7433 9933-0
Fax : +49 7433 9933-149
Email : info@kern-sohn.com
Web : www.kern-sohn.com



Scan here for more
information

PRODUCT SHOWCASE



DESCRIPTION

- For Shore hardness testing of plastics, leather etc.
- Glass plate: high measurement accuracy by means of superior hardness of the glass plate
- Mechanical construction: Robust design enables accurate measuring movements
- Level adjustment: For the precise levelling of the base plate, e.g. for the correction of inhomogeneous test objects
- with exchangeable longer column for use with digital hardness tester HD
- Hardness tester is not included with delivery
- Operation:
 1. The SAUTER hardness testing device HDD is fitted in a suspended position
 2. The test object is placed on the round testing table right under the durometer measuring tip
 3. By pressing the lever down, the test weight will be released, and this then presses the measuring tip into the test object with its own weight (see test force hardness measurement)
- The accuracy of the displayed result is about 25 % higher than in a manual operated test

SPECIFICATIONS

Article codes, product groups & Status information

Model article-code	TI-DL
Model-Serie	TI

Assortment	Sauter
Product Type	Hardness measurement
Product group	Hardness testers (Shore)
Product usage type	Main item;Accessories/Services

EAN code (Model)	4045761179172
Customs tariff number	90248000
Country of Origin	CN

Delivery time 1 d

FUNCTIONS

Standard



Technical data - Primary

Hardness scales	Shore D
-----------------	---------

Technical data - Construction

Material housing	coated metal
------------------	--------------

Technical data - Measuring system

Test force Hardness measurement	50 N
---------------------------------	------

Technical data - Environmental conditions

Maximum storage temperature	40 °C
Minimum storage temperature	-10 °C

Technical data - Packing & Shipping

Dimensions packaging (W×D×H)	355×255×180 mm
Gross weight	11 kg
Net weight	9 kg
Shipping method	Parcel service
UN number	No dangerous goods
Packaging component - by weight - cardboard	750 g
Packaging component - by weight - styrofoam	750 g

ENGLISH

SPARE PARTS

Model	Description
<u>TI-A01</u>	Accessories SAUTER TI-A01
<u>TI-A02</u>	Accessories KERN TI-A02
<u>RTI-9000</u>	RTI-9000
<u>RTI-9001</u>	Lever arm bolts SAUTER RTI-9001
<u>RTI-9002</u>	Mounting KERN RTI-9002