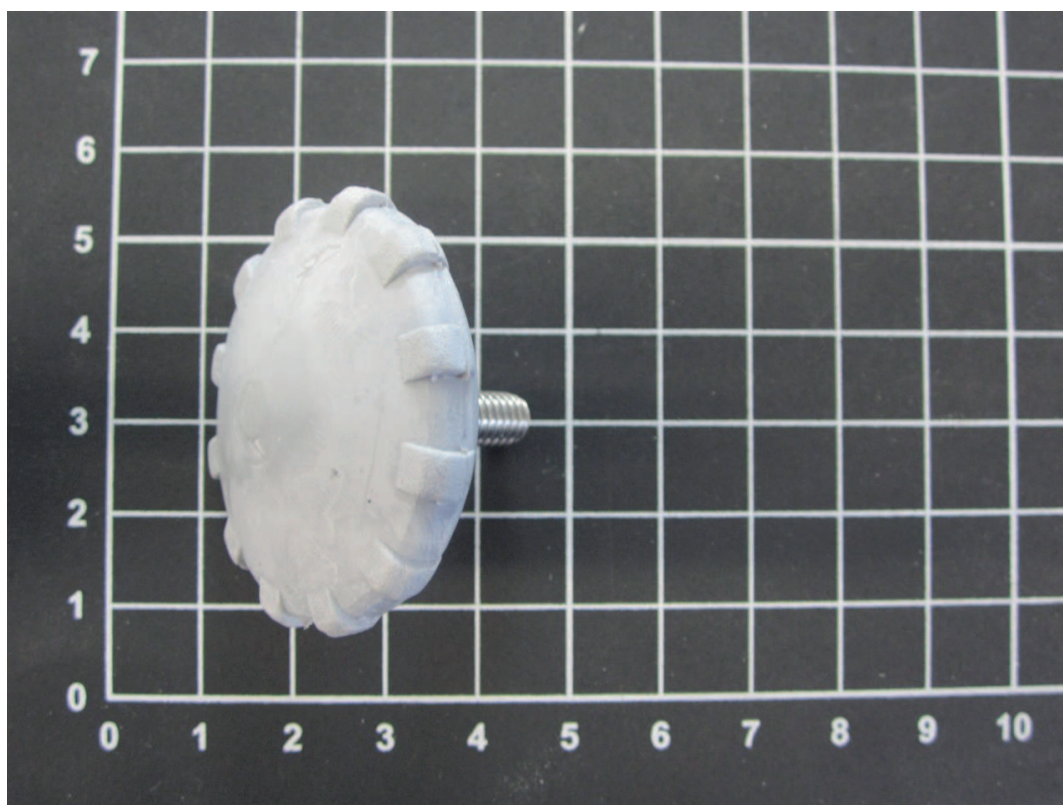


# KERN RACS-800 1

Fecha: 28.01.2025

ESPAÑOL



Pie de ajuste, Adecuado para modelo KERN ACS/ACJ, ABS-N/ABJ-NM

### CONTACT

 Dirección

**KERN & SOHN GmbH**  
Ziegelei 1  
72336 Balingen  
Germany

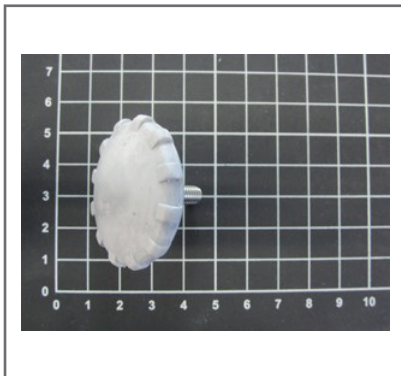
 Teléfono y fax

Teléfono : +49 - [0] 7433 - 9933 - 0  
Fax : +49 - [0] 7433 - 9933 - 149

 Internet

Correo electrónico : [info@kern-sohn.com](mailto:info@kern-sohn.com)  
Web : [www.kern-sohn.com](http://www.kern-sohn.com)

## ESCAPARATE DE PRODUCTOS



## DESCRIPCIÓN

Verstelbare voet RACS-8001

## ESPECIFICACIÓN

### Códigos de artículo, grupos de productos e información de estado

Modelo de código de artículo	RACS-8001
Serie de modelos	RACS
Surtido	KERN
Tipo de producto	Balanzas de laboratorio
Grupo de productos	Balanzas analíticas
Tipo de uso del producto	Pieza de recambio
Código EAN (Modelo)	4045761147751
Fecha de inicio prevista	unbestimmt-1HJ
Número del arancel aduanero	90160090

### Datos técnicos - Embalaje y envío

Dimensiones del embalaje (An×P×Al)	20×20×20 mm
Peso bruto	0,05 kg

Peso neto	0,05 kg
Método de envío	Servicio de paquetes
Componente del embalaje - por peso - plástico	0 g
Plazo de entrega	1 d

## DATOS DE PRODUCTOS RELACIONADOS

Nombre del modelo	Capacidad de pesada	Legibilidad	Repetibilidad	Linealidad	Valor de verificación (e)	Carga mínima (Min)
RTABP-A-4001						
RACS-2006						
RACS-3001						
RALJG-9001						
RALJG-4001						
RALJG-2001						
RTABP-A-9001						
RTALJG-9001						
RADB-4013						
TABP						
RABJ-2004						
RTABP-A-2004						
RTABP-A-2005						
RTABP-A-2006						
RTABP-A-2007						
RTABP-A-2008						
RTABP-A-6004						
RTABP-A-2001						
RTABP-A-2002						
RTABP-A-2003						
RALJN-4001						
RALS-01-001						
RALS-03-001						
RALS-03-002						
RALSN-8003						
RALSN-8004						
RALT-01-002						
RALT-02-001						
RALT-03-001						
RALT-03-003						
RALT-06-002						

ESPAÑOL

RADJ-4003

---

RADJ-2001

---

RADJ-9001

---

RADJ-2002

---

RADJ-2004

---

RADJ-2005

---

RADJ-4001

---

RADJ-4002

---

RADB-1001

---

RTACS-2001

---

RTACS-2002

---

RTACS-2003

---

RTACS-2004

---

RTACJ-2001

---

RTACS-4001

---

RADB-1002

---

RADB-1003

---

RALSA-4001

---

RALSA-2001

---

RALSA-8001

---

RALSA-8002

---

RALSA-8003

---

RALSA-8004

---

RAEJ-6002

---

RAEJ-4001

---

RAEJ-2004

---

RALJA-9001

---

RADB-8004

---

RADB-8005

---

RADB-8010

---

RADB-8011

---

RADB-6010

---

RADB-6011

---

RADB-8012

---

RADB-8013

---

RADB-4010

---

RADB-4011

---

RADB-4012

---

RADB-2010

---

RADB-3010

---

RADB-2011

---

RADB-2012

---

RADB-2013

---

RADB-8014

---

RTABP-A-6001

---

RTABP-A-6002

---

RTABP-A-6003

---

RTABP-A-8001

---

RTABP-A-8002

---

RTABP-A-8003

---

RTABP-A-8004

---

RTABP-A-8005

---

RTABP-A-8006

---

RTABP-A-8007

---

RTABP-A-8008

---

RTABP-A-8010

---

RTABP-A-8011

---

RALSA-8005

---

RAEJ-1003

---

RAEJ-8001

---

RAEJ-2003

---

RAEJ-8002

---

RAEJ-2002

---

RAET-8005

---

RAEJ-8013

---

RADB-4001

---

RADB-4002

---

RADB-6002

---

RADB-8001

---

RAES-6001

---

RABT-6001

---

RACS-6001

---

RABT-4001

---

RABT-6003

---

RABT-8003

---

RABT-8006

---

RABS-9001

---

RABT-2001-1

---

RABT-2005

---

RABT-2006

---

RABT-2008

---

RABT-6005

---

RABT-6006

---

RABT-8002

---

RABT-8005

---

RABT-8009

---

RABT-8010

---

RACJ-2001

---

RACS-2002

---

RACS-2003

---

RACS-2005

---

RACS-4006

---

RACS-8001

---

RACS-8002

---

RACS-8005

---

RACS-8007

---

RACS-8008

---

RAES-2002

---

RAES-8002

---

RAES-8003

---

RALSA-8006

---

RALTB-2001

---

RALTB-4001

---

RALTB-8004

---

RALTB-8005

---

RABT-6002

---

RABT-8008

---

RABT-8013

---

RABT-8014

---

RABT-8015

---

RACS-2001

---

RACS-6004

---

RACS-8006

---

RALJA-4001

---

RALTB-8003

---

RALTB-8006

---

RABT-6004

---

RABT-8004

---

RABT-8007

---

RACS-6002

---

RACS-8003

---

RACS-8004

---

RALJA-2004

---

RAEJ-2005

---

RABS-  
000-01-002

---

RABS-  
000-01-003

---

RABS-  
000-01-004

---

RABS-  
000-01-005

---

RABS-  
000-01-006

---

RABS-  
000-01-008

---

RABS-  
000-02-001

---

RABS-  
000-05-001

---

RABS-  
000-05-003

---

RABS-  
000-05-004

---

RABS-  
000-05-005

---

RABS-  
000-06-001

---

RABS-  
000-06-002

---

RABS-9002

---

RADB-5001

---